

## Product datasheet for **TA385602**

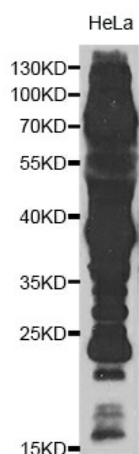
### Acetyl-Lysine Rabbit Polyclonal Antibody

#### Product data:

Product Type:	Primary Antibodies
Applications:	IP, WB
Recommended Dilution:	WB: 1/500-1/1000
Reactivity:	Broad
Host:	Rabbit
Isotype:	IgG
Clonality:	Polyclonal
Immunogen:	Acetylated BSA (Acetylated)
Formulation:	Liquid in PBS containing 50% glycerol, 0.5% BSA and 0.02% sodium azide, pH 7.3.
Concentration:	lot specific
Purification:	Affinity Purified
Conjugation:	Unconjugated
Storage:	Store at 4°C short term. Aliquot and store at -20°C long term. Avoid freeze/thaw cycles.
Stability:	1 year
Predicted Protein Size:	Refer to figures



[View online »](#)

**Product images:**

Western blot - Pan Acetyl-Lysine pAb Western blot analysis of extracts of HeLa cells, using Pan Acetyl-Lysine antibody .Secondary antibody: HRP Goat Anti-Rabbit IgG (H+L) at 1:10000 dilution.Lysates/proteins: 25ug per lane.Blocking buffer: 3% nonfat dry milk in TBST.