

## Product datasheet for **TA385594**

### Zyxin (ZYX) Rabbit Polyclonal Antibody

#### Product data:

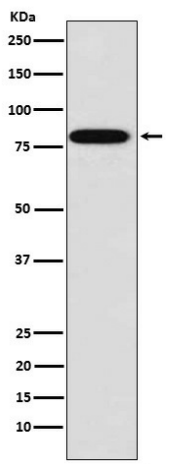
Product Type:	Primary Antibodies
Applications:	FC, IF, IHC, IP, WB
Recommended Dilution:	WB: 1/1000-1/5000 IHC: 1/50-1/200 ICC/IF: 1/50-1/200 IP: 1/50 FC: 1/500
Reactivity:	Human, Mouse
Host:	Rabbit
Isotype:	IgG
Clonality:	Polyclonal
Immunogen:	A synthesized peptide derived from human Zyxin
Formulation:	Rabbit IgG in phosphate buffered saline , pH 7.4, 150mM NaCl, 0.02% sodium azide and 50% glycerol.
Concentration:	lot specific
Purification:	Affinity Chromatography
Conjugation:	Unconjugated
Storage:	Store at 4°C short term. Aliquot and store at -20°C long term. Avoid freeze/thaw cycles.
Stability:	1 year
Predicted Protein Size:	78kDa
Gene Name:	zyxin
Database Link:	<a href="#">Entrez Gene 7791 Human Q15942</a>
Background:	Swiss-Prot Acc.Q15942.Zyxin binds alpha-actinin and the CRP proteins and is implicated in the regulation and modulation of actin filaments organization, cell adhesion, cell motility, mitosis, and signal transduction. Zyxin may shuttle between focal adhesion plaques and the nucleus. It has been suggested that zyxin is involved in gene transcription by its association with transcription factors in the nucleus.



[View online »](#)

Synonyms: ESP-2; HED-2; zyxin; Zyxin-2

### Product images:



Western blot analysis of Zyxin in MCF-7 lysates using ZYX antibody.