

## Product datasheet for **TA385589**

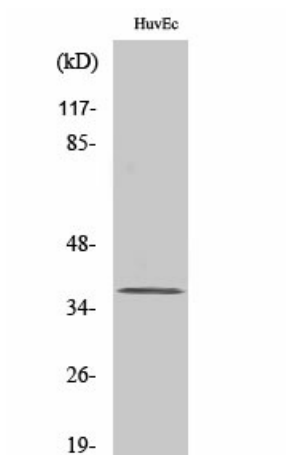
### ZFP36L1 Rabbit Polyclonal Antibody

#### Product data:

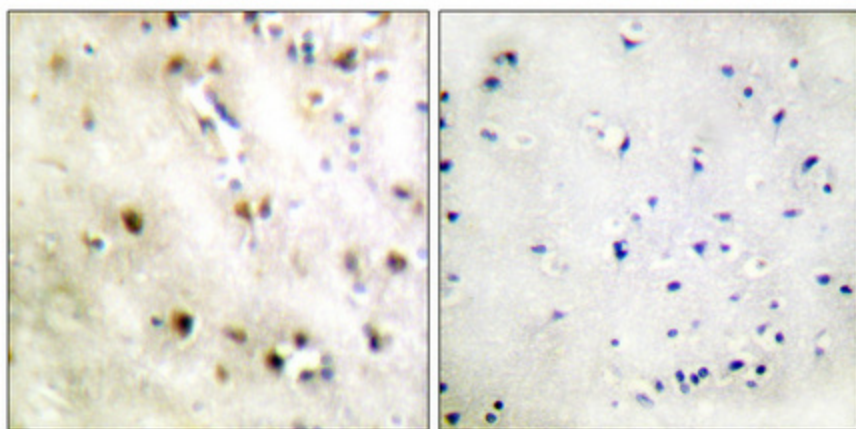
Product Type:	Primary Antibodies
Applications:	ELISA, IHC, WB
Recommended Dilution:	WB: 1/500-1/2000 IHC: 1/100-1/300 ELISA: 1/10000
Reactivity:	Human, Mouse, Rat
Host:	Rabbit
Isotype:	IgG
Clonality:	Polyclonal
Immunogen:	The antiserum was produced against synthesized peptide derived from human TISB. AA range:58-107
Formulation:	Liquid in PBS containing 50% glycerol, 0.5% BSA and 0.02% sodium azide, pH 7.3.
Concentration:	lot specific
Purification:	Affinity Purified
Conjugation:	Unconjugated
Storage:	Store at 4°C short term. Aliquot and store at -20°C long term. Avoid freeze/thaw cycles.
Stability:	1 year
Predicted Protein Size:	Observed MW (kDa):36
Database Link:	<a href="#">Q07352</a>
Background:	Swiss-Prot Acc.Q07352.



[View online »](#)

**Product images:**

Western blot analysis of ZFP36L1 in various lysates using ZFP36L1 antibody.



Immunohistochemistry analysis of paraffin-embedded Human brain using ZFP36L1 antibody. High-pressure and temperature Tris-EDTA pH 8.0 was used for antigen retrieval. Sample with blocking peptide on the right.