

Product datasheet for **TA385588**

AREB6 (ZEB1) Rabbit Polyclonal Antibody

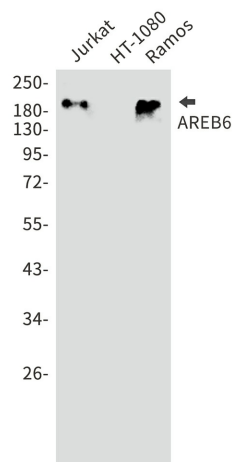
Product data:

Product Type:	Primary Antibodies
Applications:	FC, IF, IHC, WB
Recommended Dilution:	WB: 1/1000 IHC: 1/20 ICC/IF: 1/50 FC: 1/200
Reactivity:	Human
Host:	Rabbit
Isotype:	IgG
Clonality:	Polyclonal
Immunogen:	Recombinant protein of human AREB6
Formulation:	50mM Tris-Glycine(pH 7.4), 0.15M NaCl, 40% Glycerol, 0.01% Sodium azide and 0.05% BSA
Concentration:	lot specific
Purification:	Affinity Purified
Conjugation:	Unconjugated
Storage:	Store at 4°C short term. Aliquot and store at -20°C long term. Avoid freeze/thaw cycles.
Stability:	1 year
Predicted Protein Size:	Calculated MW: 124 kDa; Observed MW: 200 kDa
Gene Name:	zinc finger E-box binding homeobox 1
Database Link:	Entrez Gene 6935 Human P37275
Background:	Swiss-Prot Acc.P37275.
Synonyms:	AREB6; BZP; DELTA-EF1; MGC133261; NIL-2-A; NIL-2A; NIL2A; TCF8; ZEB; ZFHEP; ZFHX1A



[View online »](#)

Product images:



Western blot analysis of ZEB1/TCF8 in Jurkat, HT-1080, Ramos lysates using ZEB1 antibody.