

Product datasheet for **TA385583S**

YY1 Rabbit Polyclonal Antibody

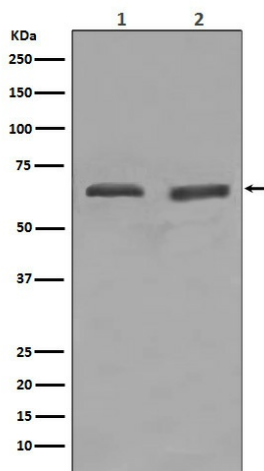
Product data:

Product Type:	Primary Antibodies
Applications:	IF, IHC, IP, WB
Recommended Dilution:	WB: 1/500-1/3000 IHC: 1/50-1/200 ICC/IF: 1/100-1/500 IP: 1/50-1/100
Reactivity:	Human, Mouse, Rat
Host:	Rabbit
Isotype:	IgG
Clonality:	Polyclonal
Immunogen:	A synthesized peptide derived from human YY1
Formulation:	Rabbit IgG in phosphate buffered saline , pH 7.4, 150mM NaCl, 0.02% sodium azide and 50% glycerol.
Concentration:	lot specific
Purification:	Affinity Chromatography
Conjugation:	Unconjugated
Storage:	Store at 4°C short term. Aliquot and store at -20°C long term. Avoid freeze/thaw cycles.
Stability:	1 year
Predicted Protein Size:	68kDa
Gene Name:	YY1 transcription factor
Database Link:	Entrez Gene 7528 Human P25490
Background:	Swiss-Prot Acc.P25490.Its activity is regulated by transcription factors and cytoplasmic proteins that have been shown to abrogate or completely inhibit YY1-mediated activation or repression. For example, it acts as a repressor in absence of adenovirus E1A protein but as an activator in its presence. Acts synergistically with the SMAD1 and SMAD4 in bone morphogenetic protein (BMP)-mediated cardiac-specific gene expression.
Synonyms:	DELTA; INO80S; NF-E1; UCRBP; YIN-YANG-1; YY-1

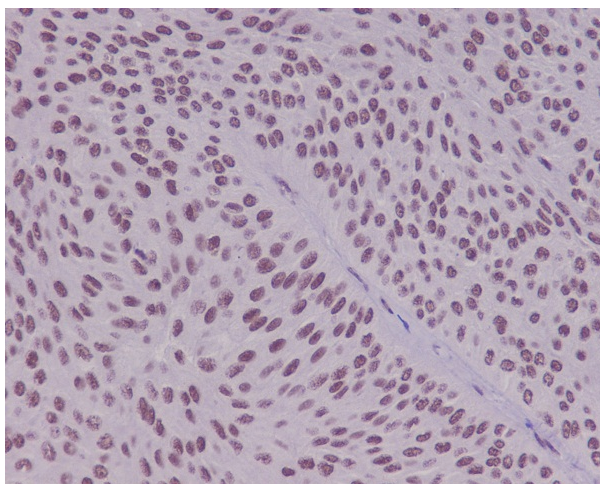


[View online »](#)

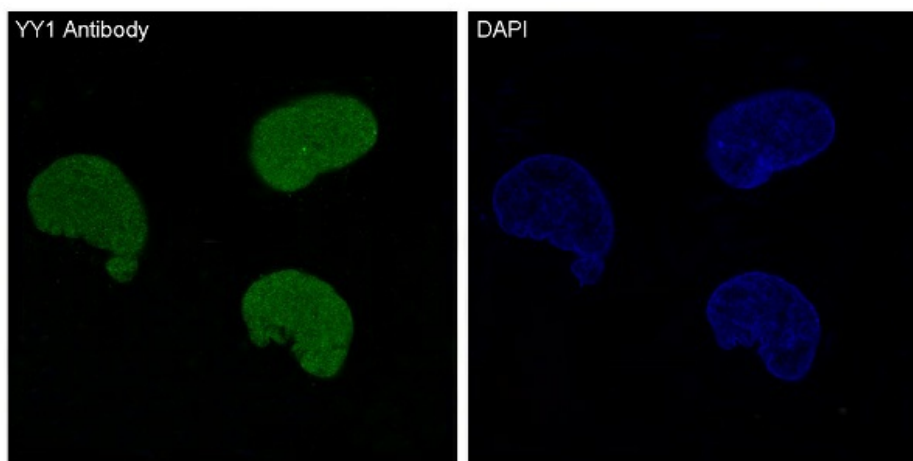
Product images:



Western blot analysis of YY1 in (1) HeLa lysates; (2) Daudi lysates using YY1 antibody.



Immunohistochemistry analysis of paraffin-embedded Human bladder using YY1 antibody. High-pressure and temperature Sodium Citrate pH 6.0 was used for antigen retrieval.



Immunofluorescence analysis of YY1 in HeLa using YY1 antibody.