

Product datasheet for TA385582M

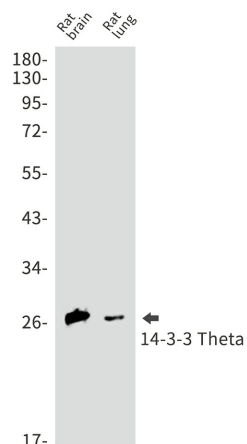
14-3-3 theta (YWHAQ) Rabbit Monoclonal Antibody [Clone ID: R07-8G4]

Product data:

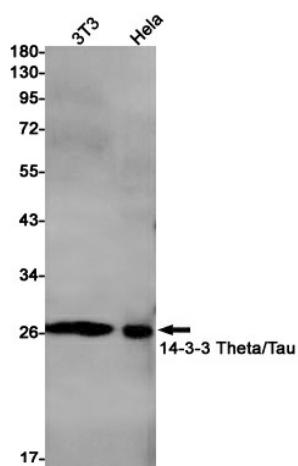
| | |
|-------------------------|---|
| Product Type: | Primary Antibodies |
| Clone Name: | R07-8G4 |
| Applications: | WB |
| Recommended Dilution: | WB: 1/2000-1/10000 |
| Reactivity: | Human, Mouse, Rat |
| Host: | Rabbit |
| Isotype: | IgG |
| Clonality: | Monoclonal |
| Immunogen: | A synthetic peptide of human 14-3-3 Theta/Tau |
| Formulation: | 50mM Tris-Glycine(pH 7.4), 0.15M NaCl, 40% Glycerol, 0.01% Sodium azide and 0.05% BSA |
| Concentration: | lot specific |
| Purification: | Affinity Purified |
| Conjugation: | Unconjugated |
| Storage: | Store at 4°C short term. Aliquot and store at -20°C long term. Avoid freeze/thaw cycles. |
| Stability: | 1 year |
| Predicted Protein Size: | Calculated MW: 28 kDa; Observed MW: 28 kDa |
| Gene Name: | tyrosine 3-monooxygenase/tryptophan 5-monooxygenase activation protein theta |
| Database Link: | Entrez Gene 10971 Human P27348 |
| Background: | Swiss-Prot Acc.P27348.Adapter protein implicated in the regulation of a large spectrum of both general and specialized signaling pathways. Binds to a large number of partners, usually by recognition of a phosphoserine or phosphothreonine motif. Binding generally results in the modulation of the activity of the binding partner. Negatively regulates the kinase activity of PDPK1. |
| Synonyms: | 1C5; 14-3-3; HS1; OTTHUMP00000165887 |


[View online »](#)

Product images:



Western blot analysis of 14-3-3 Theta in rat brain, rat lung lysates using 14-3-3 theta antibody.



Western blot analysis of 14-3-3 Theta/Tau in 3T3, HeLa lysates using 14-3-3 Theta/Tau antibody.