

Product datasheet for **TA385580S**

YWHAH Mouse Monoclonal Antibody [Clone ID: 5F2F1E11]

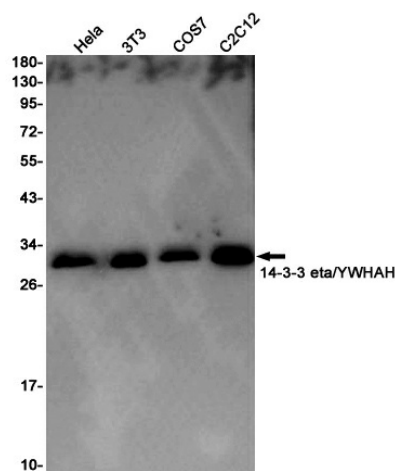
Product data:

Product Type:	Primary Antibodies
Clone Name:	5F2F1E11
Applications:	WB
Recommended Dilution:	WB: 1/1000
Reactivity:	Human, Mouse, Rat
Host:	Mouse
Isotype:	IgG
Clonality:	Monoclonal
Immunogen:	Antibodies are produced by immunizing animals with a synthetic peptide corresponding to the sequence of human 14-3-3 η .
Formulation:	Liquid in PBS containing 50% glycerol, 0.5% BSA and 0.03% Proclin 300, pH 7.3.
Concentration:	lot specific
Purification:	Affinity Purified
Conjugation:	Unconjugated
Storage:	Store at 4°C short term. Aliquot and store at -20°C long term. Avoid freeze/thaw cycles.
Stability:	1 year
Predicted Protein Size:	Predicted band size: 28 kDa. Observed band size: 28 kDa
Database Link:	Q04917
Background:	Swiss-Prot Acc.Q04917.Adapter protein implicated in the regulation of a large spectrum of both general and specialized signaling pathways. Binds to a large number of partners, usually by recognition of a phosphoserine or phosphothreonine motif. Binding generally results in the modulation of the activity of the binding partner.



[View online »](#)

Product images:



Western blot detection of 14-3-3 eta/YWHAH in HeLa, 3T3, COS7 and C2C12 cell lysates using 14-3-3 eta/YWHAH Mouse mAb (1:1000 diluted). Predicted band size: 28KDa. Observed band size: 28KDa.