

Product datasheet for **TA385580**

YWHAH Mouse Monoclonal Antibody [Clone ID: 5F2F1E11]

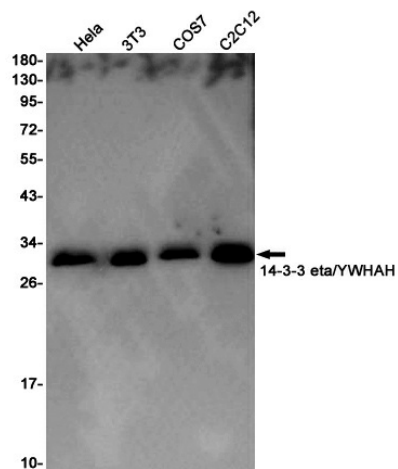
Product data:

| | |
|-------------------------|--|
| Product Type: | Primary Antibodies |
| Clone Name: | 5F2F1E11 |
| Applications: | WB |
| Recommended Dilution: | WB: 1/1000 |
| Reactivity: | Human, Mouse, Rat |
| Host: | Mouse |
| Isotype: | IgG |
| Clonality: | Monoclonal |
| Immunogen: | Antibodies are produced by immunizing animals with a synthetic peptide corresponding to the sequence of human 14-3-3 η . |
| Formulation: | Liquid in PBS containing 50% glycerol, 0.5% BSA and 0.03% Proclin 300, pH 7.3. |
| Concentration: | lot specific |
| Purification: | Affinity Purified |
| Conjugation: | Unconjugated |
| Storage: | Store at 4°C short term. Aliquot and store at -20°C long term. Avoid freeze/thaw cycles. |
| Stability: | 1 year |
| Predicted Protein Size: | Predicted band size: 28 kDa. Observed band size: 28 kDa |
| Database Link: | Q04917 |
| Background: | Swiss-Prot Acc.Q04917.Adapter protein implicated in the regulation of a large spectrum of both general and specialized signaling pathways. Binds to a large number of partners, usually by recognition of a phosphoserine or phosphothreonine motif. Binding generally results in the modulation of the activity of the binding partner. |



[View online »](#)

Product images:



Western blot detection of 14-3-3 eta/YWHAH in HeLa, 3T3, COS7 and C2C12 cell lysates using 14-3-3 eta/YWHAH Mouse mAb (1:1000 diluted). Predicted band size: 28KDa. Observed band size: 28KDa.