

## Product datasheet for **TA385577**

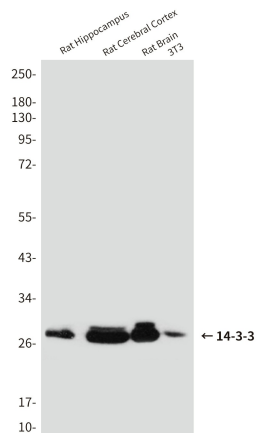
### 14-3-3 beta (YWHAB) Rabbit Polyclonal Antibody

#### Product data:

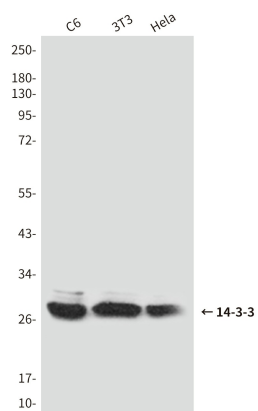
Product Type:	Primary Antibodies
Applications:	WB
Recommended Dilution:	WB: 1/500
Reactivity:	Human, Mouse, Rat
Host:	Rabbit
Isotype:	IgG
Clonality:	Polyclonal
Immunogen:	Synthetic peptide.
Formulation:	Liquid in PBS containing 50% glycerol, 0.5% BSA and 0.03% Proclin 300, pH 7.3.
Concentration:	lot specific
Purification:	Affinity Purified
Conjugation:	Unconjugated
Storage:	Store at 4°C short term. Aliquot and store at -20°C long term. Avoid freeze/thaw cycles.
Stability:	1 year
Predicted Protein Size:	27-29kDa
Gene Name:	tyrosine 3-monooxygenase/tryptophan 5-monooxygenase activation protein beta
Database Link:	<a href="#">Entrez Gene 7529 Human P31946</a>
Background:	Swiss-Prot Acc.P31946,P62258,Q04917,P61981,P31947,P27348,P63104.
Synonyms:	GW128; HS1; KCIP-1



[View online »](#)

**Product images:**


Western blot analysis of 14-3-3 (pan) in rat Hippocampus, rat Cerebral Cortex and rat Brain lysates using 14-3-3 (pan) antibody.



Western blot analysis of 14-3-3 in C6, 3T3 and HeLa lysates using 14-3-3 (pan) antibody.