

## Product datasheet for **TA385575M**

### **YTHDF1 Rabbit Monoclonal Antibody [Clone ID: R05-2E7]**

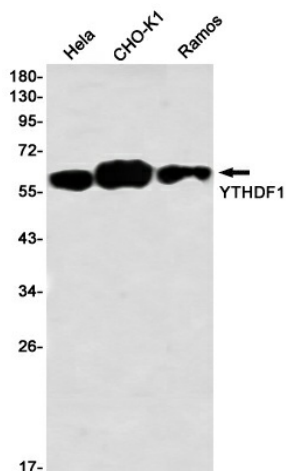
#### **Product data:**

Product Type:	Primary Antibodies
Clone Name:	R05-2E7
Applications:	IP, WB
Recommended Dilution:	WB: 1/1000 IP: 1/20
Reactivity:	Human, Hamster
Host:	Rabbit
Isotype:	IgG
Clonality:	Monoclonal
Immunogen:	Recombinant protein of human YTHDF1
Formulation:	50mM Tris-Glycine(pH 7.4), 0.15M NaCl, 40% Glycerol, 0.01% Sodium azide and 0.05% BSA
Concentration:	lot specific
Purification:	Affinity Purified
Conjugation:	Unconjugated
Storage:	Store at 4°C short term. Aliquot and store at -20°C long term. Avoid freeze/thaw cycles.
Stability:	1 year
Predicted Protein Size:	Calculated MW:61 kDa,Observed MW:61 kDa
Gene Name:	YTH N6-methyladenosine RNA binding protein 1
Database Link:	<a href="#">Entrez Gene 54915 Human P59326</a>
Synonyms:	C20orf21; DACA-1; FLJ20391



[View online »](#)

## Product images:



Western blot detection of YTHDF1 in HeLa, CHO-K1, Ramos using YTHDF1 Rabbit mAb(1:1000 diluted)