

## Product datasheet for **TA385574M**

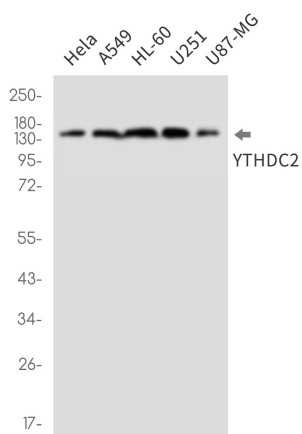
### YTHDC2 Rabbit Monoclonal Antibody [Clone ID: R04-7F8]

#### Product data:

Product Type:	Primary Antibodies
Clone Name:	R04-7F8
Applications:	IP, WB
Recommended Dilution:	WB: 1/1000 IP: 1/20
Reactivity:	Human
Host:	Rabbit
Isotype:	IgG
Clonality:	Monoclonal
Immunogen:	Recombinant protein of human YTHDC2
Formulation:	50mM Tris-Glycine(pH 7.4), 0.15M NaCl, 40% Glycerol, 0.01% Sodium azide and 0.05% BSA
Concentration:	lot specific
Purification:	Affinity Purified
Conjugation:	Unconjugated
Storage:	Store at 4°C short term. Aliquot and store at -20°C long term. Avoid freeze/thaw cycles.
Stability:	1 year
Predicted Protein Size:	Calculated MW:160 kDa,Observed MW:160 kDa
Gene Name:	YTH domain containing 2
Database Link:	<a href="#">Entrez Gene 64848 Human B2RR83</a>
Synonyms:	DKFZp564A186; FLJ2194; FLJ10053

[View online »](#)

## Product images:



Western blot analysis of YTHDC2 in HeLa, A549, HL-60, U251, U87-MG lysates using YTHDC2 antibody.