

## Product datasheet for **TA385571S**

### **YB1 (YBX1) Rabbit Polyclonal Antibody**

#### **Product data:**

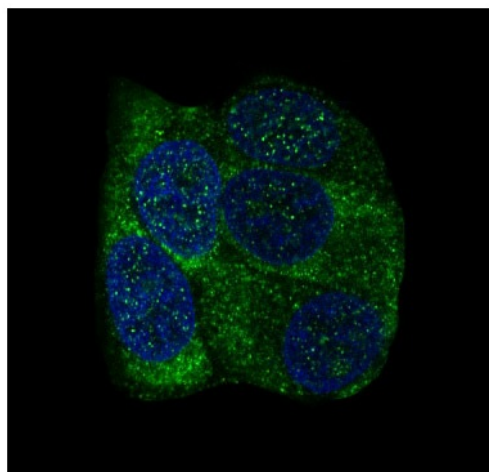
<b>Product Type:</b>	Primary Antibodies
<b>Applications:</b>	FC, IF, IHC, IP, WB
<b>Recommended Dilution:</b>	WB: 1/500-1/2000 IHC: 1/50-1/200 ICC/IF: 1/50-1/200 IP: 1/50
<b>Reactivity:</b>	Human, Mouse, Rat
<b>Host:</b>	Rabbit
<b>Isotype:</b>	IgG
<b>Clonality:</b>	Polyclonal
<b>Immunogen:</b>	A synthesized peptide derived from human YB1
<b>Formulation:</b>	Rabbit IgG in phosphate buffered saline , pH 7.4, 150mM NaCl, 0.02% sodium azide and 50% glycerol.
<b>Concentration:</b>	lot specific
<b>Purification:</b>	Affinity Chromatography
<b>Conjugation:</b>	Unconjugated
<b>Storage:</b>	Store at 4°C short term. Aliquot and store at -20°C long term. Avoid freeze/thaw cycles.
<b>Stability:</b>	1 year
<b>Predicted Protein Size:</b>	50kDa
<b>Gene Name:</b>	Y-box binding protein 1
<b>Database Link:</b>	<a href="#">Entrez Gene 4904 Human P67809</a>
<b>Background:</b>	Swiss-Prot Acc.P67809.Mediates pre-mRNA alternative splicing regulation. Binds to splice sites in pre-mRNA and regulates splice site selection. Binds and stabilizes cytoplasmic mRNA. Contributes to the regulation of translation by modulating the interaction between the mRNA and eukaryotic initiation factors (By similarity). Regulates the transcription of numerous genes.



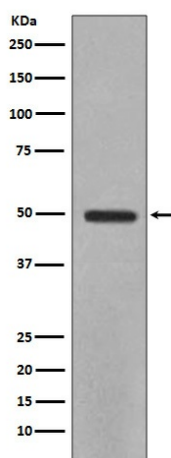
[View online »](#)

**Synonyms:** BP-8; CBF-A; CSDA2; CSDB; DBPB; EFI-A; MDR-NF1; MGC104858; MGC110976; MGC117250; NSEP-1; NSEP1; YB-1; YB1

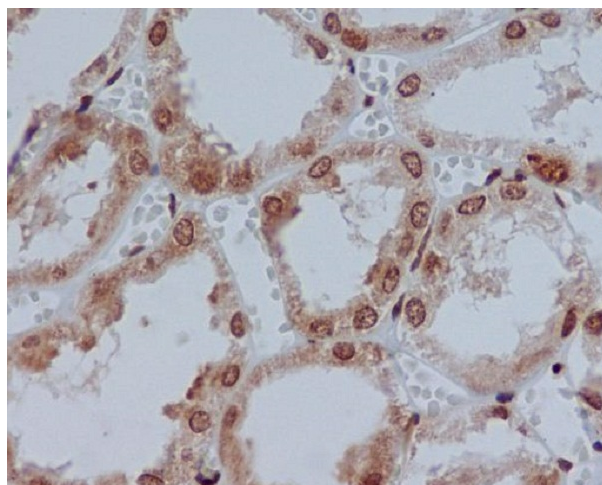
**Product images:**



Immunofluorescent analysis of MCF-7 cells, using YB1 Antibody.



Western blot analysis of YB1 in HeLa lysates using YB1 antibody.



Immunohistochemical analysis of paraffin-embedded human kidney, using YB1 Antibody.