

Product datasheet for **TA385571M**

YB1 (YBX1) Rabbit Polyclonal Antibody

Product data:

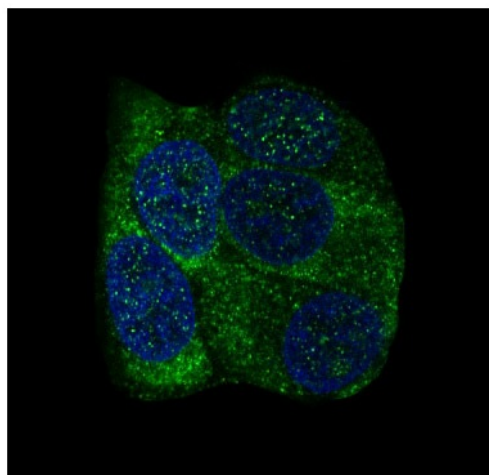
Product Type:	Primary Antibodies
Applications:	FC, IF, IHC, IP, WB
Recommended Dilution:	WB: 1/500-1/2000 IHC: 1/50-1/200 ICC/IF: 1/50-1/200 IP: 1/50
Reactivity:	Human, Mouse, Rat
Host:	Rabbit
Isotype:	IgG
Clonality:	Polyclonal
Immunogen:	A synthesized peptide derived from human YB1
Formulation:	Rabbit IgG in phosphate buffered saline , pH 7.4, 150mM NaCl, 0.02% sodium azide and 50% glycerol.
Concentration:	lot specific
Purification:	Affinity Chromatography
Conjugation:	Unconjugated
Storage:	Store at 4°C short term. Aliquot and store at -20°C long term. Avoid freeze/thaw cycles.
Stability:	1 year
Predicted Protein Size:	50kDa
Gene Name:	Y-box binding protein 1
Database Link:	Entrez Gene 4904 Human P67809
Background:	Swiss-Prot Acc.P67809.Mediates pre-mRNA alternative splicing regulation. Binds to splice sites in pre-mRNA and regulates splice site selection. Binds and stabilizes cytoplasmic mRNA. Contributes to the regulation of translation by modulating the interaction between the mRNA and eukaryotic initiation factors (By similarity). Regulates the transcription of numerous genes.



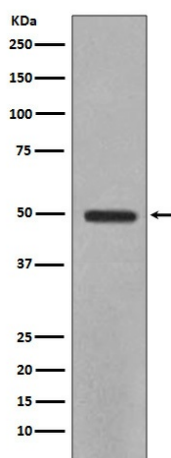
[View online »](#)

Synonyms: BP-8; CBF-A; CSDA2; CSDB; DBPB; EFI-A; MDR-NF1; MGC104858; MGC110976; MGC117250; NSEP-1; NSEP1; YB-1; YB1

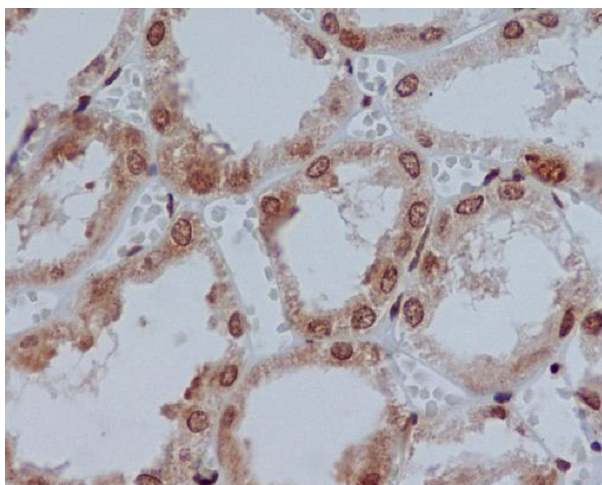
Product images:



Immunofluorescent analysis of MCF-7 cells, using YB1 Antibody.



Western blot analysis of YB1 in HeLa lysates using YB1 antibody.



Immunohistochemical analysis of paraffin-embedded human kidney, using YB1 Antibody.