

Product datasheet for **TA385568S**

Exportin 4 (XPO4) Rabbit Monoclonal Antibody [Clone ID: R09-1A2]

Product data:

| | |
|-------------------------|--|
| Product Type: | Primary Antibodies |
| Clone Name: | R09-1A2 |
| Applications: | IP, WB |
| Recommended Dilution: | WB: 1/1000-1/5000 IP: 1/20-1/50 |
| Reactivity: | Human, Rat |
| Host: | Rabbit |
| Isotype: | IgG |
| Clonality: | Monoclonal |
| Immunogen: | A synthetic peptide of human Exportin 4 |
| Formulation: | 50mM Tris-Glycine(pH 7.4), 0.15M NaCl, 40% Glycerol, 0.01% Sodium azide and 0.05% BSA |
| Concentration: | lot specific |
| Purification: | Affinity Purified |
| Conjugation: | Unconjugated |
| Storage: | Store at 4°C short term. Aliquot and store at -20°C long term. Avoid freeze/thaw cycles. |
| Stability: | 1 year |
| Predicted Protein Size: | Calculated MW: 130 kDa; Observed MW: 130 kDa |
| Gene Name: | exportin 4 |
| Database Link: | Entrez Gene 64328 Human Q9C0E2 |



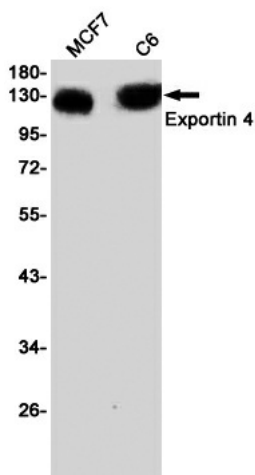
[View online »](#)

Background:

Swiss-Prot Acc.Q9C0E2.Mediates the nuclear export of proteins (cargos) with broad substrate specificity. In the nucleus binds cooperatively to its cargo and to the GTPase Ran in its active GTP-bound form. Docking of this trimeric complex to the nuclear pore complex (NPC) is mediated through binding to nucleoporins. Upon transit of a nuclear export complex into the cytoplasm, disassembling of the complex and hydrolysis of Ran-GTP to Ran-GDP (induced by RANBP1 and RANGAP1, respectively) cause release of the cargo from the export receptor. XPO4 then return to the nuclear compartment and mediate another round of transport. The directionality of nuclear export is thought to be conferred by an asymmetric distribution of the GTP- and GDP-bound forms of Ran between the cytoplasm and nucleus.

Synonyms:

Exp4; FLJ13046; KIAA1721

Product images:

Western blot detection of Exportin 4 in MCF7,C6 cell lysates using Exportin 4 Rabbit mAb(1:1000 diluted).Predicted band size:130KDa.Observed band size:130KDa.