

## Product datasheet for **TA385565M**

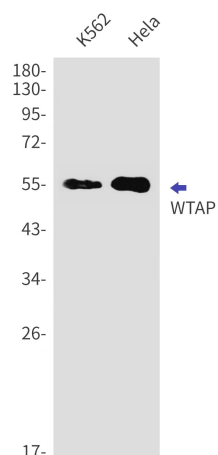
### WTAP Rabbit Monoclonal Antibody [Clone ID: R09-9D8]

#### Product data:

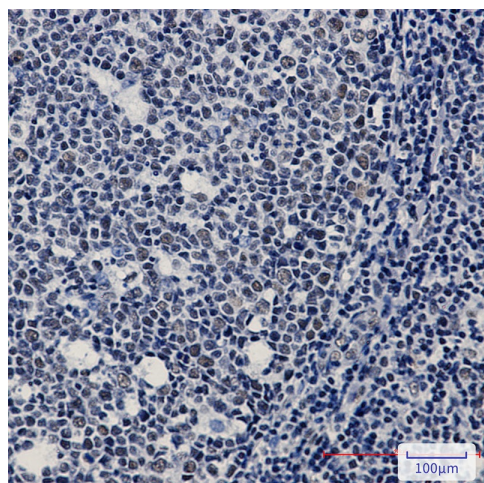
Product Type:	Primary Antibodies
Clone Name:	R09-9D8
Applications:	IHC, IP, WB
Recommended Dilution:	WB: 1/1000 IHC: 1/20 IP: 1/20
Reactivity:	Human
Host:	Rabbit
Isotype:	IgG
Clonality:	Monoclonal
Immunogen:	Recombinant protein of human WTAP
Formulation:	50mM Tris-Glycine(pH 7.4), 0.15M NaCl, 40% Glycerol, 0.01% Sodium azide and 0.05% BSA
Concentration:	lot specific
Purification:	Affinity Purified
Conjugation:	Unconjugated
Storage:	Store at 4°C short term. Aliquot and store at -20°C long term. Avoid freeze/thaw cycles.
Stability:	1 year
Predicted Protein Size:	Calculated MW: 44 kDa; Observed MW: 55 kDa
Gene Name:	Wilms tumor 1 associated protein
Database Link:	<a href="#">Entrez Gene 9589 Human Q15007</a>
Background:	Swiss-Prot Acc.Q15007.
Synonyms:	DKFZp686F20131; hFL(2)D; KIAA0105; MGC3925; PNAS-132

[View online »](#)

## Product images:



Western blot analysis of WTAP in K562, HeLa lysates using WTAP antibody.



Immunohistochemistry analysis of paraffin-embedded Human tonsil using WTAP antibody. High-pressure and temperature Sodium Citrate pH 6.0 was used for antigen retrieval.