

## Product datasheet for **TA385560**

### WNT2B Rabbit Polyclonal Antibody

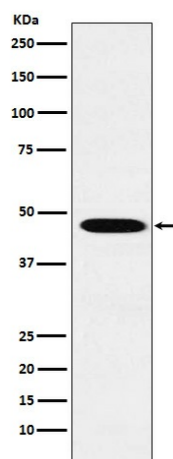
#### Product data:

Product Type:	Primary Antibodies
Applications:	FC, IF, WB
Recommended Dilution:	WB: 1/500-1/2000 ICC/IF: 1/50-1/200 FC: 1/50
Reactivity:	Human, Mouse, Rat
Host:	Rabbit
Isotype:	IgG
Clonality:	Polyclonal
Immunogen:	A synthesized peptide derived from human Wnt2b
Formulation:	Rabbit IgG in phosphate buffered saline , pH 7.4, 150mM NaCl, 0.02% sodium azide and 50% glycerol.
Concentration:	lot specific
Purification:	Affinity Chromatography
Conjugation:	Unconjugated
Storage:	Store at 4°C short term. Aliquot and store at -20°C long term. Avoid freeze/thaw cycles.
Stability:	1 year
Predicted Protein Size:	44kDa
Gene Name:	Wnt family member 2B
Database Link:	<a href="#">Entrez Gene 7482 Human Q93097</a>
Background:	Ligand for members of the frizzled family of seven transmembrane receptors. Probable developmental protein. May be a signaling molecule which affects the development of discrete regions of tissues. Is likely to signal over only few cell diameters.
Synonyms:	Wnt-13; WNT13; XWNT2



[View online »](#)

## Product images:



Western blot analysis of Wnt2b in HepG2 lysates using Wnt2b antibody.