

## Product datasheet for **TA385559**

### WNT16 Rabbit Polyclonal Antibody

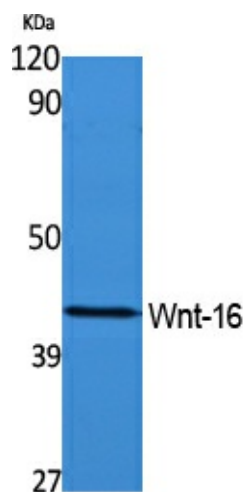
#### Product data:

Product Type:	Primary Antibodies
Applications:	ELISA, WB
Recommended Dilution:	WB: 1/500-1/2000 ELISA: 1/40000
Reactivity:	Human, Mouse, Rat
Host:	Rabbit
Isotype:	IgG
Clonality:	Polyclonal
Immunogen:	Synthesized peptide derived from the Internal region of human Wnt-16.
Formulation:	Liquid in PBS containing 50% glycerol, 0.5% BSA and 0.02% sodium azide, pH 7.3.
Concentration:	lot specific
Purification:	Affinity Purified
Conjugation:	Unconjugated
Storage:	Store at 4°C short term. Aliquot and store at -20°C long term. Avoid freeze/thaw cycles.
Stability:	1 year
Predicted Protein Size:	Observed MW (kDa):40
Gene Name:	Wnt family member 16
Database Link:	<a href="#">Entrez Gene 51384 Human Q9UBV4</a>
Background:	Swiss-Prot Acc.Q9UBV4.
Synonyms:	WNT16



[View online »](#)

## Product images:



Western blot analysis of Wnt16 in rat kidney lysates using Wnt16 antibody.