

Product datasheet for **TA385558**

WNT1 Rabbit Polyclonal Antibody

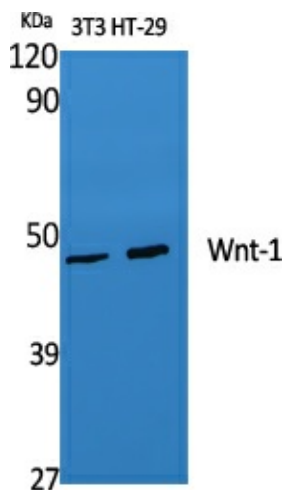
Product data:

Product Type:	Primary Antibodies
Applications:	ELISA, IF, IHC, WB
Recommended Dilution:	WB: 1/500-1/2000 IHC: 1/100-1/300 IF: 1/200-1/1000 ELISA: 1/10000
Reactivity:	Human, Mouse
Host:	Rabbit
Isotype:	IgG
Clonality:	Polyclonal
Immunogen:	The antiserum was produced against synthesized peptide derived from human WNT1. AA range:301-350
Formulation:	Liquid in PBS containing 50% glycerol, 0.5% BSA and 0.02% sodium azide, pH 7.3.
Concentration:	lot specific
Purification:	Affinity Purified
Conjugation:	Unconjugated
Storage:	Store at 4°C short term. Aliquot and store at -20°C long term. Avoid freeze/thaw cycles.
Stability:	1 year
Predicted Protein Size:	Observed MW (kDa):45
Gene Name:	Wnt family member 1
Database Link:	Entrez Gene 7471 Human P04628
Background:	Swiss-Prot Acc.P04628.
Synonyms:	INT1

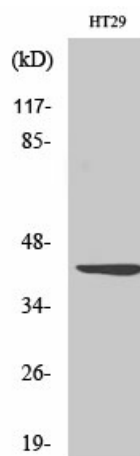


[View online »](#)

Product images:



Western blot analysis of Wnt1 in various lysates using Wnt1 antibody.



Western blot analysis of Wnt1 in HT-29 lysates using Wnt1 antibody.