

## Product datasheet for **TA385556S**

### WAVE 1 (WASF1) Rabbit Monoclonal Antibody [Clone ID: R03-5K1]

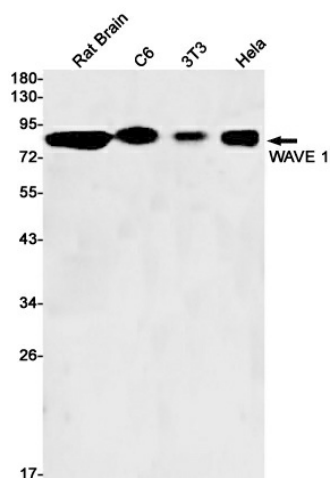
#### Product data:

Product Type:	Primary Antibodies
Clone Name:	R03-5K1
Applications:	WB
Recommended Dilution:	WB: 1/1000-1/5000
Reactivity:	Human, Mouse, Rat
Host:	Rabbit
Isotype:	IgG
Clonality:	Monoclonal
Immunogen:	Recombinant protein of human WAVE 1
Formulation:	50mM Tris-Glycine(pH 7.4), 0.15M NaCl, 40% Glycerol, 0.01% Sodium azide and 0.05% BSA
Concentration:	lot specific
Purification:	Affinity Purified
Conjugation:	Unconjugated
Storage:	Store at 4°C short term. Aliquot and store at -20°C long term. Avoid freeze/thaw cycles.
Stability:	1 year
Predicted Protein Size:	Calculated MW: 62 kDa; Observed MW: 90 kDa
Gene Name:	WAS protein family member 1
Database Link:	<a href="#">Entrez Gene 8936 Human Q92558</a>
Background:	Swiss-Prot Acc.Q92558.Downstream effector molecule involved in the transmission of signals from tyrosine kinase receptors and small GTPases to the actin cytoskeleton. Promotes formation of actin filaments. Part of the WAVE complex that regulates lamellipodia formation. The WAVE complex regulates actin filament reorganization via its interaction with the Arp2/3 complex . As component of the WAVE1 complex, required for BDNF-NTRK2 endocytic trafficking and signaling from early endosomes .
Synonyms:	FLJ31482; KIAA0269; OTTHUMP00000016990; SCAR1; WAVE; WAVE1



[View online »](#)

## Product images:



Western blot analysis of WAVE 1 in rat Brain, C6, 3T3, HeLa lysates using WAVE 1 antibody.