

Product datasheet for **TA385550**

Vimentin (VIM) Rabbit Polyclonal Antibody

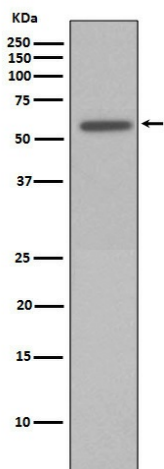
Product data:

Product Type:	Primary Antibodies
Applications:	IP, WB
Recommended Dilution:	WB: 1/500-1/2000 IP: 1/50
Reactivity:	Human, Mouse, Rat
Host:	Rabbit
Isotype:	IgG
Clonality:	Polyclonal
Immunogen:	A synthesized peptide derived from human Phospho-Vimentin (S72) (Phosphorylated)
Formulation:	Rabbit IgG in phosphate buffered saline , pH 7.4, 150mM NaCl, 0.02% sodium azide and 50% glycerol.
Concentration:	lot specific
Purification:	Affinity Chromatography
Conjugation:	Unconjugated
Storage:	Store at 4°C short term. Aliquot and store at -20°C long term. Avoid freeze/thaw cycles.
Stability:	1 year
Predicted Protein Size:	53kDa
Gene Name:	vimentin
Database Link:	Entrez Gene 7431 Human P08670
Background:	Swiss-Prot Acc.P08670.Vimentin an intermediate filament protein. Intermediate filament proteins are expressed in a tissue-specific manner. Desmin is the subunit specific for muscle and vimentin the subunit specific for mesenchymal tissue.
Synonyms:	FLJ36605; vimentin



[View online »](#)

Product images:



Western blot analysis of Phospho-Vimentin (Ser72) in HeLa lysates treated with Calyculin A using Phospho-Vimentin (Ser72) antibody.