

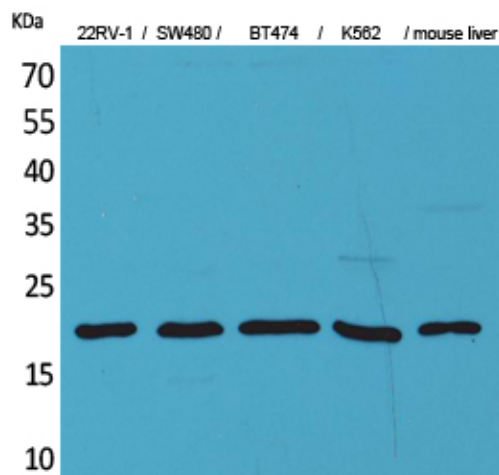
## Product datasheet for **TA385547M**

### VEGFA Rabbit Polyclonal Antibody

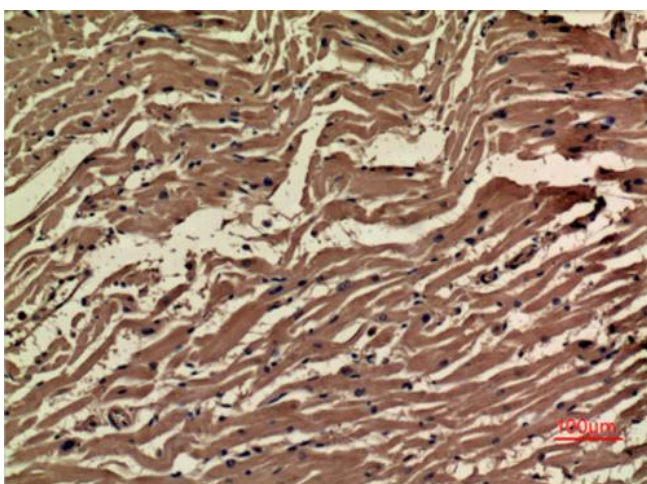
#### Product data:

Product Type:	Primary Antibodies
Applications:	ELISA, IHC, WB
Recommended Dilution:	WB: 1/500-1/2000 IHC-p: 1/100-300 ELISA: 1/20000
Reactivity:	Human
Host:	Rabbit
Isotype:	IgG
Clonality:	Polyclonal
Immunogen:	The antiserum was produced against synthesized peptide derived from the Internal region of human VEGFA. AA range:101-150
Formulation:	Liquid in PBS containing 50% glycerol, 0.5% BSA and 0.02% sodium azide, pH 7.3.
Concentration:	lot specific
Purification:	Affinity Purified
Conjugation:	Unconjugated
Storage:	Store at 4°C short term. Aliquot and store at -20°C long term. Avoid freeze/thaw cycles.
Stability:	1 year
Predicted Protein Size:	17 kDa
Gene Name:	vascular endothelial growth factor A
Database Link:	<a href="#">Entrez Gene 7422 Human P15692</a>
Background:	Swiss-Prot Acc.P15692.
Synonyms:	MGC70609; MVCD1; VEGF; VEGF-A; VPF

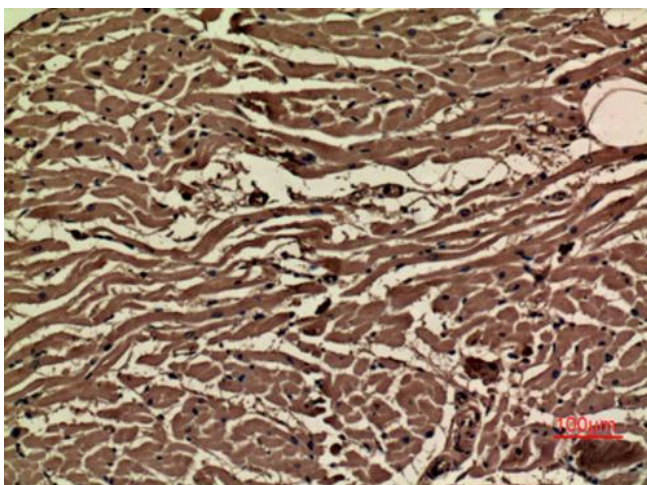
[View online »](#)

**Product images:**


Western Blot analysis of 22RV-1, SW480, BT474, K562, mouse liver cells using VEGF-A Polyclonal Antibody. Antibody was diluted at 1:500. Secondary antibody was diluted at 1:20000



Immunohistochemical analysis of paraffin-embedded human-heart, antibody was diluted at 1:100



Immunohistochemical analysis of paraffin-embedded human-heart, antibody was diluted at 1:1