

Product datasheet for **TA385542S**

Vinculin (VCL) Rabbit Monoclonal Antibody [Clone ID: R04-8F9]

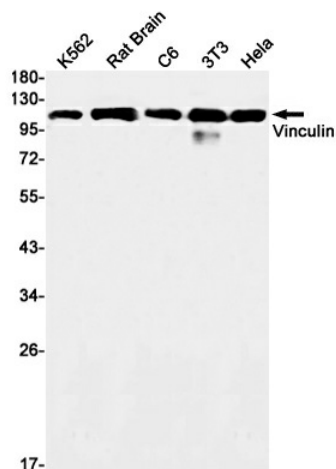
Product data:

Product Type:	Primary Antibodies
Clone Name:	R04-8F9
Applications:	IF, IP, WB
Recommended Dilution:	WB: 1/2000 ICC/IF: 1/50 IP: 1/20
Reactivity:	Human, Mouse, Rat
Host:	Rabbit
Isotype:	IgG
Clonality:	Monoclonal
Immunogen:	A synthetic peptide of human Vinculin
Formulation:	50mM Tris-Glycine(pH 7.4), 0.15M NaCl, 40% Glycerol, 0.01% Sodium azide and 0.05% BSA
Concentration:	lot specific
Purification:	Affinity Purified
Conjugation:	Unconjugated
Storage:	Store at 4°C short term. Aliquot and store at -20°C long term. Avoid freeze/thaw cycles.
Stability:	1 year
Predicted Protein Size:	Calculated MW: 124 kDa; Observed MW: 124 kDa
Gene Name:	vinculin
Database Link:	Entrez Gene 7414 Human P18206
Background:	Swiss-Prot Acc.P18206.Actin filament (F-actin)-binding protein involved in cell-matrix adhesion and cell-cell adhesion. Regulates cell-surface E-cadherin expression and potentiates mechanosensing by the E-cadherin complex. May also play important roles in cell morphology and locomotion.
Synonyms:	CMD1W; metavinculin; MVCL; vinculin

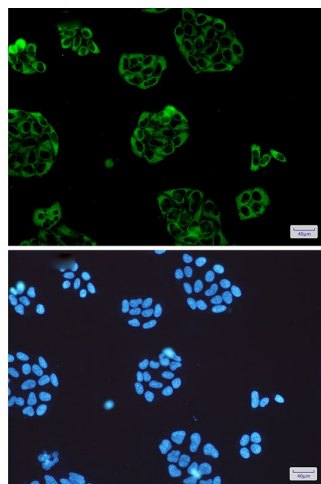


[View online »](#)

Product images:



Western blot analysis of Vinculin in K562, rat Brain, C6, 3T3, HeLa lysates using Vinculin antibody.



Immunocytochemistry analysis of Vinculin (green) in HeLa using Vinculin antibody, and DAPI (blue)