

## Product datasheet for **TA385540S**

### Vcam1 Rabbit Monoclonal Antibody [Clone ID: R07-6E9]

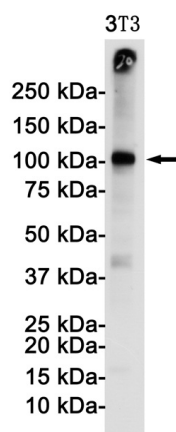
#### Product data:

Product Type:	Primary Antibodies
Clone Name:	R07-6E9
Applications:	IP, WB
Recommended Dilution:	WB: 1/1000 IP: 1/20
Reactivity:	Mouse
Host:	Rabbit
Isotype:	IgG
Clonality:	Monoclonal
Immunogen:	Recombinant protein of mouse VCAM1
Formulation:	50mM Tris-Glycine(pH 7.4), 0.15M NaCl, 40% Glycerol, 0.01% Sodium azide and 0.05% BSA
Concentration:	lot specific
Purification:	Affinity Purified
Conjugation:	Unconjugated
Storage:	Store at 4°C short term. Aliquot and store at -20°C long term. Avoid freeze/thaw cycles.
Stability:	1 year
Predicted Protein Size:	Calculated MW: 81 kDa; Observed MW: 100 kDa
Gene Name:	vascular cell adhesion molecule 1
Database Link:	<a href="#">Entrez Gene 22329 Mouse P29533</a>
Background:	Swiss-Prot Acc.P29533.
Synonyms:	CD106; DKFZp779G2333; INCAM-100; L1CAM; MGC99561



[View online »](#)

## Product images:



Western blot analysis of VCAM1 in 3T3 lysates using VCAM1 antibody.