

## Product datasheet for **TA385539**

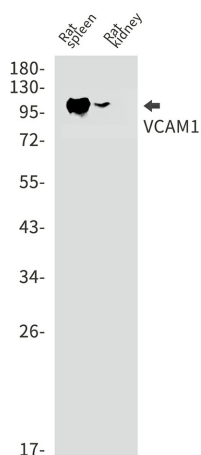
### VCAM1 Rabbit Monoclonal Antibody [Clone ID: R02-7H1]

#### Product data:

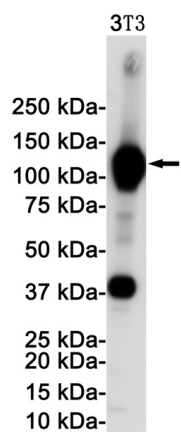
Product Type:	Primary Antibodies
Clone Name:	R02-7H1
Applications:	IHC, IP, WB
Recommended Dilution:	WB: 1/2000 IHC: 1/20-1/500 IP: 1/20
Reactivity:	Human, Mouse, Rat
Host:	Rabbit
Isotype:	IgG
Clonality:	Monoclonal
Immunogen:	A synthetic peptide of mouse VCAM1
Formulation:	50mM Tris-Glycine(pH 7.4), 0.15M NaCl, 40% Glycerol, 0.01% Sodium azide and 0.05% BSA
Concentration:	lot specific
Purification:	Affinity Purified
Conjugation:	Unconjugated
Storage:	Store at 4°C short term. Aliquot and store at -20°C long term. Avoid freeze/thaw cycles.
Stability:	1 year
Predicted Protein Size:	Calculated MW: 81 kDa; Observed MW: 110 kDa
Gene Name:	vascular cell adhesion molecule 1
Database Link:	<a href="#">Entrez Gene 7412 Human P19320</a>
Background:	Swiss-Prot Acc.P19320.Important in cell-cell recognition. Appears to function in leukocyte-endothelial cell adhesion. Interacts with integrin alpha-4/beta-1 (ITGA4/ITGB1) on leukocytes, and mediates both adhesion and signal transduction. The VCAM1/ITGA4/ITGB1 interaction may play a pathophysiologic role both in immune responses and in leukocyte emigration to sites of inflammation.
Synonyms:	CD106; DKFZp779G2333; INCAM-100; L1CAM; MGC99561



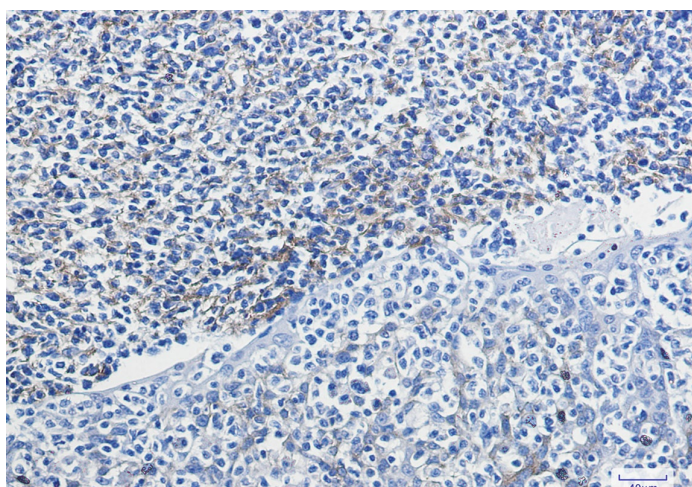
[View online »](#)

**Product images:**


Western blot analysis of VCAM1 in rat spleen, rat kidney lysates using VCAM1 antibody.



Western blot analysis of VCAM1 in 3T3 lysates using VCAM1 antibody.



Immunohistochemistry analysis of paraffin-embedded Human tonsil using VCAM1 antibody. High-pressure and temperature Sodium Citrate pH 6.0 was used for antigen retrieval.