

Product datasheet for **TA385535S**

VAMP2 Rabbit Monoclonal Antibody [Clone ID: R04-7A5]

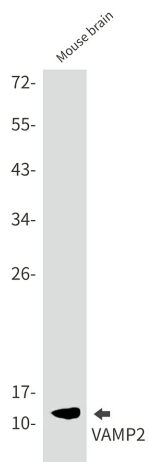
Product data:

Product Type:	Primary Antibodies
Clone Name:	R04-7A5
Applications:	IF, IP, WB
Recommended Dilution:	WB: 1/2000-1/10000 ICC/IF: 1/50 IP: 1/20
Reactivity:	Human, Mouse, Rat
Host:	Rabbit
Isotype:	IgG
Clonality:	Monoclonal
Immunogen:	A synthetic peptide of human VAMP2
Formulation:	50mM Tris-Glycine(pH 7.4), 0.15M NaCl, 40% Glycerol, 0.01% Sodium azide and 0.05% BSA
Concentration:	lot specific
Purification:	Affinity Purified
Conjugation:	Unconjugated
Storage:	Store at 4°C short term. Aliquot and store at -20°C long term. Avoid freeze/thaw cycles.
Stability:	1 year
Predicted Protein Size:	Calculated MW: 13 kDa; Observed MW: 13 kDa
Gene Name:	vesicle associated membrane protein 2
Database Link:	Entrez Gene 6844 Human P63027
Background:	Swiss-Prot Acc.P63027.Involved in the targeting and/or fusion of transport vesicles to their target membrane. Modulates the gating characteristics of the delayed rectifier voltage-dependent potassium channel KCNB1.
Synonyms:	FLJ11460; SYB2; Synaptobrevin-2; VAMP-2

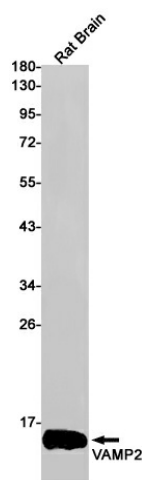


[View online »](#)

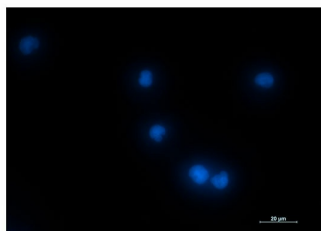
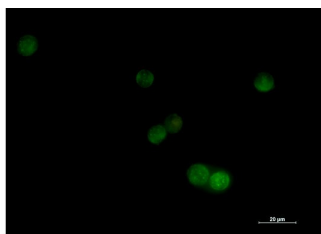
Product images:



Western blot analysis of VAMP2 in mouse brain lysates using VAMP2 antibody.



Western blot analysis of VAMP2 in rat Brain lysates using VAMP2 antibody



Immunocytochemistry analysis of VAMP2 (green) in Jurkat using VAMP2 antibody, and DAPI (blue).