

Product datasheet for **TA385534**

VAMP2 Rabbit Polyclonal Antibody

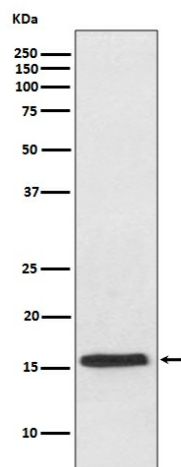
Product data:

Product Type:	Primary Antibodies
Applications:	FC, IF, IP, WB
Recommended Dilution:	WB: 1/1000-1/5000 ICC/IF: 1/50-1/200 IP: 1/50 FC: 1/50
Reactivity:	Human, Mouse, Rat
Host:	Rabbit
Isotype:	IgG
Clonality:	Polyclonal
Immunogen:	A synthesized peptide derived from human VAMP2
Formulation:	Rabbit IgG in phosphate buffered saline , pH 7.4, 150mM NaCl, 0.02% sodium azide and 50% glycerol.
Concentration:	lot specific
Purification:	Affinity Chromatography
Conjugation:	Unconjugated
Storage:	Store at 4°C short term. Aliquot and store at -20°C long term. Avoid freeze/thaw cycles.
Stability:	1 year
Predicted Protein Size:	16kDa
Gene Name:	vesicle associated membrane protein 2
Database Link:	Entrez Gene 6844 Human P63027
Background:	Swiss-Prot Acc.P63027.The SNARE complex is involved in vesicular transport and membrane fusion, a process regulated by calcium. In neurons, VAMP2 is predominantly inserted in presynaptic vesicle membranes. Assembly of VAMP2 with the plasma membrane SNAREs syntaxin 1 and SNAP25 is a key event necessary for membrane fusion and neurotransmitter release.
Synonyms:	FLJ11460; SYB2; Synaptobrevin-2; VAMP-2



[View online »](#)

Product images:



Western blot analysis of VAMP2 in mouse brain lysates using VAMP2 antibody.