

## Product datasheet for **TA385532**

### USP13 Rabbit Polyclonal Antibody

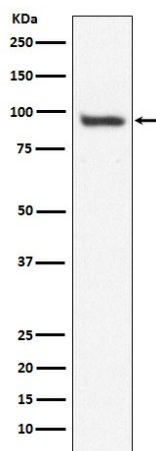
#### Product data:

Product Type:	Primary Antibodies
Applications:	FC, IF, IP, WB
Recommended Dilution:	WB: 1/500-1/2000 ICC/IF: 1/50-1/200 IP: 1/50 FC: 1/100
Reactivity:	Human, Mouse
Host:	Rabbit
Isotype:	IgG
Clonality:	Polyclonal
Immunogen:	A synthesized peptide derived from human USP13
Formulation:	Rabbit IgG in phosphate buffered saline , pH 7.4, 150mM NaCl, 0.02% sodium azide and 50% glycerol.
Concentration:	lot specific
Purification:	Affinity Chromatography
Conjugation:	Unconjugated
Storage:	Store at 4°C short term. Aliquot and store at -20°C long term. Avoid freeze/thaw cycles.
Stability:	1 year
Predicted Protein Size:	97kDa
Gene Name:	ubiquitin specific peptidase 13 (isopeptidase T-3)
Database Link:	<a href="#">Entrez Gene 8975 Human Q92995</a>
Background:	Swiss-Prot Acc.Q92995.Mediates deubiquitination of BECN1, a key regulator of autophagy, leading to stabilize the PIK3C3/VPS34-containing complexes. Also deubiquitinates USP10, an essential regulator of p53/TP53 stability.
Synonyms:	IsoT-3; ISOT3



[View online »](#)

## Product images:



Western blot analysis of USP13 in HepG2 lysates using USP13 antibody.