

## Product datasheet for TA385527M

### UQCRCF1 Rabbit Monoclonal Antibody [Clone ID: R06-5I3]

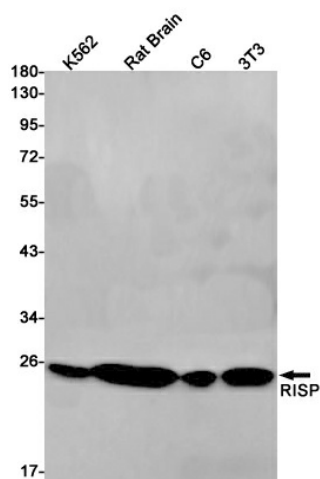
#### Product data:

Product Type:	Primary Antibodies
Clone Name:	R06-5I3
Applications:	IF, IHC, IP, WB
Recommended Dilution:	WB: 1/1000 IHC: 1/200 ICC/IF: 1/20 IP: 1/20
Reactivity:	Human, Mouse, Rat
Host:	Rabbit
Isotype:	IgG
Clonality:	Monoclonal
Immunogen:	A synthetic peptide of human RISP
Formulation:	50mM Tris-Glycine(pH 7.4), 0.15M NaCl, 40% Glycerol, 0.01% Sodium azide and 0.05% BSA
Concentration:	lot specific
Purification:	Affinity Purified
Conjugation:	Unconjugated
Storage:	Store at 4°C short term. Aliquot and store at -20°C long term. Avoid freeze/thaw cycles.
Stability:	1 year
Predicted Protein Size:	Calculated MW: 30 kDa; Observed MW: 24 kDa
Gene Name:	ubiquinol-cytochrome c reductase, Rieske iron-sulfur polypeptide 1
Database Link:	<a href="#">Entrez Gene 7386 Human P47985</a>
Background:	Swiss-Prot Acc.P47985.Cytochrome b-c1 complex subunit Rieske, mitochondrial: Component of the mitochondrial ubiquinol-cytochrome c reductase complex dimer (complex III dimer), which is a respiratory chain that generates an electrochemical potential coupled to ATP synthesis (PubMed:28673544). Incorporation of UQCRCF1 is the penultimate step in complex III assembly .

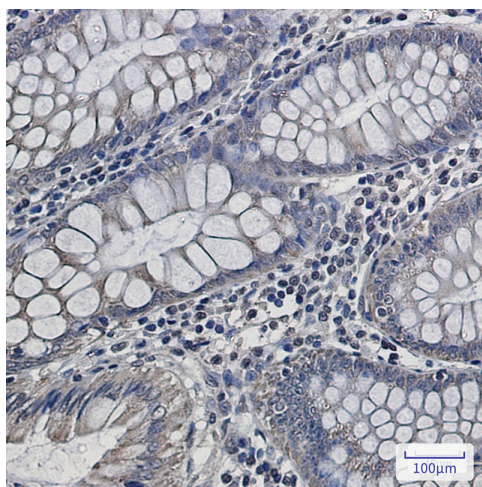

[View online »](#)

**Synonyms:** RIP1; RIS1; RISP; UQCR5

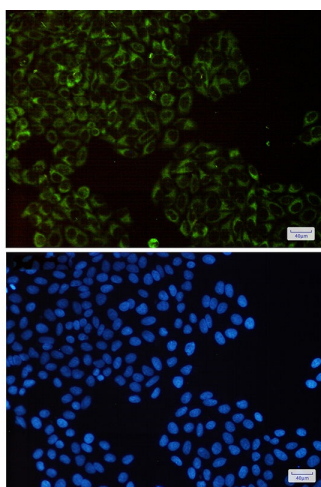
**Product images:**



Western blot analysis of RISP in K562, rat Brain, C6, 3T3 lysates using Complex III Subunit 5 antibody.



Immunohistochemistry analysis of paraffin-embedded Human colon cancer using UQCRFS1/RISP antibody. High-pressure and temperature Sodium Citrate pH 6.0 was used for antigen retrieval.



Immunocytochemistry analysis of RISP(green) in HeLa using RISP antibody, and DAPI(blue)