

Product datasheet for **TA385522**

RAP80 (UIMC1) Rabbit Polyclonal Antibody

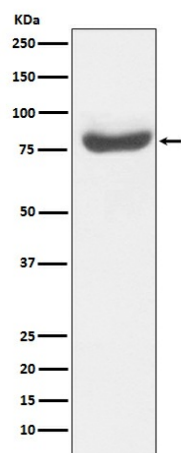
Product data:

Product Type:	Primary Antibodies
Applications:	IF, IHC, WB
Recommended Dilution:	WB: 1/1000-1/5000 IHC: 1/50-1/200 ICC/IF: 1/50-1/200
Reactivity:	Human
Host:	Rabbit
Isotype:	IgG
Clonality:	Polyclonal
Immunogen:	A synthesized peptide derived from human RAP80
Formulation:	Rabbit IgG in phosphate buffered saline , pH 7.4, 150mM NaCl, 0.02% sodium azide and 50% glycerol.
Concentration:	lot specific
Purification:	Affinity Chromatography
Conjugation:	Unconjugated
Storage:	Store at 4°C short term. Aliquot and store at -20°C long term. Avoid freeze/thaw cycles.
Stability:	1 year
Predicted Protein Size:	80kDa
Gene Name:	ubiquitin interaction motif containing 1
Database Link:	Entrez Gene 51720 Human Q96RL1
Background:	Swiss-Prot Acc.Q96RL1.Ubiquitin-binding protein that specifically recognizes and binds 'Lys-63'-linked ubiquitin. Plays a central role in the BRCA1-A complex by specifically binding 'Lys-63'-linked ubiquitinated histones H2A and H2AX at DNA lesions sites, leading to target the BRCA1-BARD1 heterodimer to sites of DNA damage at double-strand breaks (DSBs).
Synonyms:	RAP80; RXRIP110; X2HRIP110



[View online »](#)

Product images:



Western blot analysis of RAP80 in 293T lysates using RAP80 antibody.