

## Product datasheet for **TA385519**

### UBE2I Rabbit Monoclonal Antibody [Clone ID: R01-6I6]

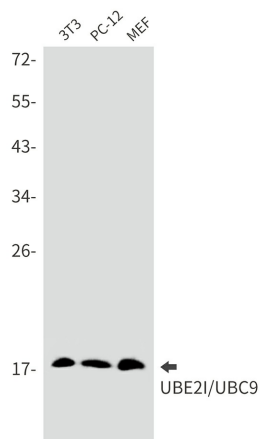
#### Product data:

Product Type:	Primary Antibodies
Clone Name:	R01-6I6
Applications:	IF, IHC, IP, WB
Recommended Dilution:	WB: 1/1000 IHC: 1/50 ICC/IF: 1/50 IP: 1/20
Reactivity:	Human, Mouse, Rat
Host:	Rabbit
Isotype:	IgG
Clonality:	Monoclonal
Immunogen:	A synthetic peptide of human UBE2I/UBC9
Formulation:	50mM Tris-Glycine(pH 7.4), 0.15M NaCl, 40% Glycerol, 0.01% Sodium azide and 0.05% BSA
Concentration:	lot specific
Purification:	Affinity Purified
Conjugation:	Unconjugated
Storage:	Store at 4°C short term. Aliquot and store at -20°C long term. Avoid freeze/thaw cycles.
Stability:	1 year
Predicted Protein Size:	Calculated MW:18 kDa,Observed MW:18 kDa
Gene Name:	ubiquitin conjugating enzyme E2 I
Database Link:	<a href="#">Entrez Gene 7329 Human P63279</a>
Synonyms:	C358B7.1; OTTHUMP00000198126; OTTHUMP00000198127; P18; UBC9; UBCE9

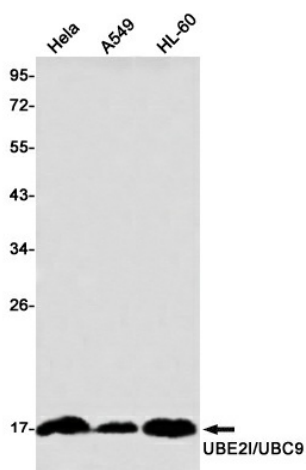


[View online »](#)

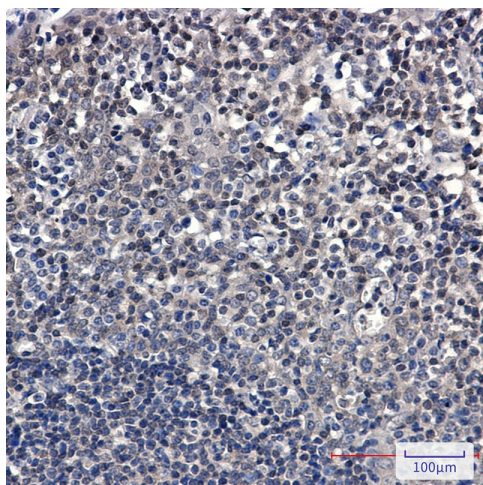
Product images:



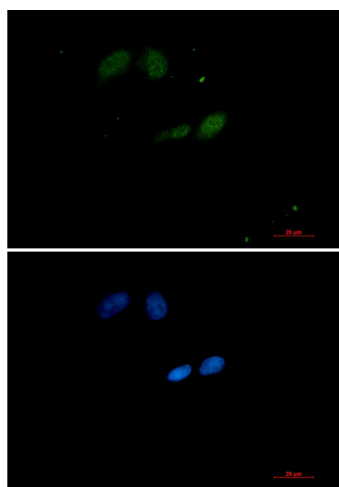
Western blot analysis of UBE2I/UBC9 in 3T3, PC-12, MEF lysates using UBE2I/UBC9 antibody.



Western blot analysis of UBE2I/UBC9 in HeLa, A549, HL-60 lysates using UBE2I/UBC9 antibody



Immunohistochemistry analysis of paraffin-embedded Human tonsil using UBE2I/UBC9 antibody. High-pressure and temperature Sodium Citrate pH 6.0 was used for antigen retrieval.



Immunocytochemistry analysis of SUMO Conjugating Enzyme UBC9 (green) in HeLa using SUMO Conjugating Enzyme UBC9 antibody, and DAPI (blue).