

Product datasheet for **TA385516**

UBE2A Rabbit Polyclonal Antibody

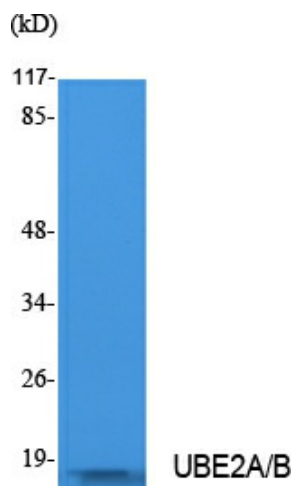
Product data:

Product Type:	Primary Antibodies
Applications:	ELISA, IHC, WB
Recommended Dilution:	WB: 1/500-1/2000 IHC-p: 1/100-300 ELISA: 1/10000
Reactivity:	Human, Mouse, Rat
Host:	Rabbit
Isotype:	IgG
Clonality:	Polyclonal
Immunogen:	Synthesized peptide derived from the C-terminal region of human UBE2A/B.
Formulation:	Liquid in PBS containing 50% glycerol, 0.5% BSA and 0.02% sodium azide, pH 7.3.
Concentration:	lot specific
Purification:	Affinity Purified
Conjugation:	Unconjugated
Storage:	Store at 4°C short term. Aliquot and store at -20°C long term. Avoid freeze/thaw cycles.
Stability:	1 year
Predicted Protein Size:	Observed MW (kDa):17
Database Link:	P49459
Background:	Swiss-Prot Acc.P49459/P63146.

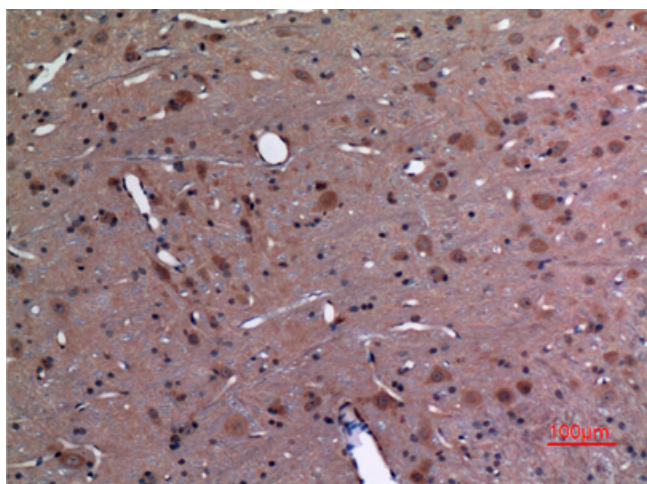


[View online »](#)

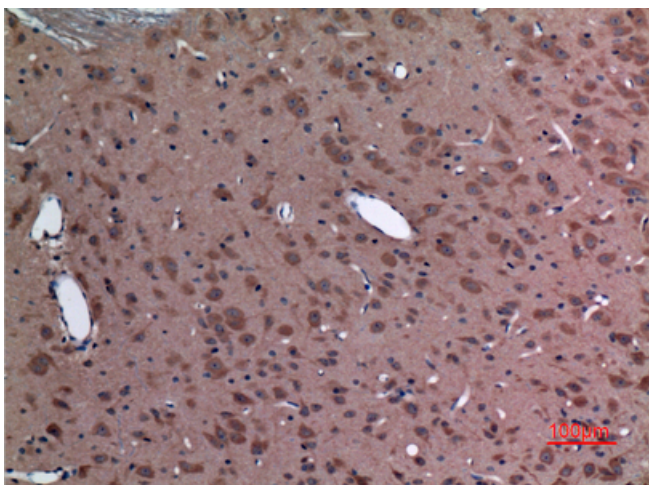
Product images:



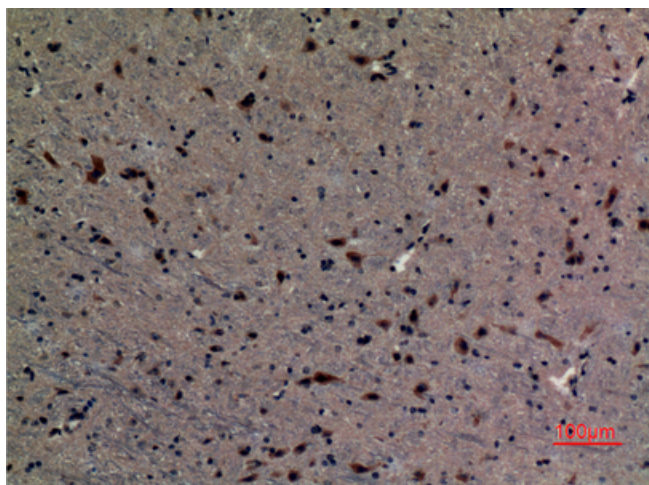
Western blot analysis of Ubiquitin Conjugating Enzyme E2 A/B in Jurkat lysates using UBE2A/B antibody.



Immunohistochemistry analysis of paraffin-embedded rat brain using Ubiquitin Conjugating Enzyme E2 A/B antibody. High-pressure and temperature Sodium Citrate pH 6.0 was used for antigen retrieval.



Immunohistochemistry analysis of paraffin-embedded rat brain using Ubiquitin Conjugating Enzyme E2 A/B antibody. High-pressure and temperature Sodium Citrate pH 6.0 was used for antigen retrieval.



Immunohistochemistry analysis of paraffin-embedded mouse brain using Ubiquitin Conjugating Enzyme E2 A/B antibody. High-pressure and temperature Sodium Citrate pH 6.0 was used for antigen retrieval.