

Product datasheet for **TA385513S**

Ubiquitin (UBB) Rabbit Monoclonal Antibody [Clone ID: R06-2H7]

Product data:

Product Type:	Primary Antibodies
Clone Name:	R06-2H7
Applications:	IF, IHC, WB
Recommended Dilution:	WB: 1/2000 IHC: 1/50 ICC/IF: 1/100
Reactivity:	Human, Mouse, Rat
Host:	Rabbit
Isotype:	IgG
Clonality:	Monoclonal
Immunogen:	A synthetic peptide of human K-48 Linkage Specific Ubiquitin
Formulation:	50mM Tris-Glycine(pH 7.4), 0.15M NaCl, 40% Glycerol, 0.01% Sodium azide and 0.05% BSA
Concentration:	lot specific
Purification:	Affinity Purified
Conjugation:	Unconjugated
Storage:	Store at 4°C short term. Aliquot and store at -20°C long term. Avoid freeze/thaw cycles.
Stability:	1 year
Predicted Protein Size:	Refer to figures
Gene Name:	ubiquitin B
Database Link:	Entrez Gene 7314 Human P0CG47



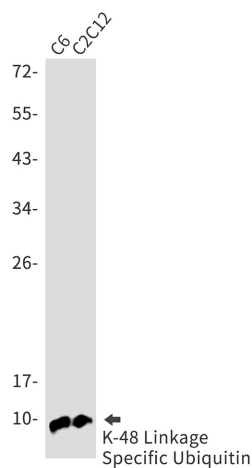
[View online »](#)

Background:

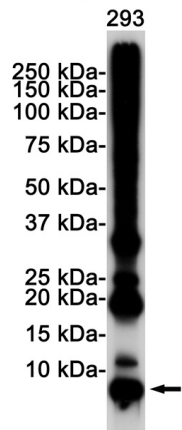
Swiss-Prot Acc.P0CG47.Ubiquitin: Exists either covalently attached to another protein, or free (unanchored). When covalently bound, it is conjugated to target proteins via an isopeptide bond either as a monomer (monoubiquitin), a polymer linked via different Lys residues of the ubiquitin (polyubiquitin chains) or a linear polymer linked via the initiator Met of the ubiquitin (linear polyubiquitin chains). Polyubiquitin chains, when attached to a target protein, have different functions depending on the Lys residue of the ubiquitin that is linked: Lys-6-linked may be involved in DNA repair; Lys-11-linked is involved in ERAD (endoplasmic reticulum-associated degradation) and in cell-cycle regulation; Lys-29-linked is involved in lysosomal degradation; Lys-33-linked is involved in kinase modification; Lys-48-linked is involved in protein degradation via the proteasome; Lys-63-linked is involved in endocytosis, DNA-damage responses as well as in signaling processes leading to activation of the transcription factor NF-kappa-B. Linear polymer chains formed via attachment by the initiator Met lead to cell signaling. Ubiquitin is usually conjugated to Lys residues of target proteins, however, in rare cases, conjugation to Cys or Ser residues has been observed. When polyubiquitin is free (unanchored-polyubiquitin), it also has distinct roles, such as in activation of protein kinases, and in signaling.

Synonyms:

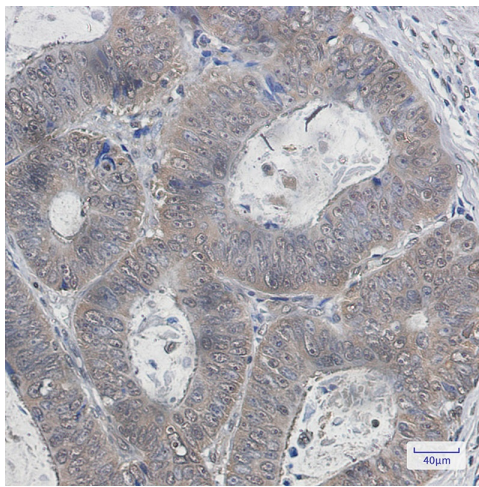
FLJ25987; MGC8385; OTTHUMP00000064960; OTTHUMP00000064961; UBA80; UBCEP1; UBCEP2

Product images:

Western blot analysis of K48 Linkage Specific Ubiquitin in C6, C2C12 lysates using Ubiquitin K48 antibody.



Western blot analysis of K48 Linkage Specific Ubiquitin in 293 lysates using K48 Linkage Specific Ubiquitin antibody.



Immunohistochemistry analysis of paraffin-embedded Human colon cancer using K48 Linkage Specific Ubiquitin antibody. High-pressure and temperature Sodium Citrate pH 6.0 was used for antigen retrieval.