

Product datasheet for **TA385511**

Ubiquitin (UBB) Rabbit Polyclonal Antibody

Product data:

| | |
|-----------------------|--|
| Product Type: | Primary Antibodies |
| Applications: | FC, IF, IHC, WB |
| Recommended Dilution: | WB: 1/100-1/500 IHC: 1/50-1/200 ICC/IF: 1/50-1/200 FC: 1/50 |
| Reactivity: | Human, Mouse, Rat |
| Host: | Rabbit |
| Isotype: | IgG |
| Clonality: | Polyclonal |
| Immunogen: | A synthesized peptide derived from human K48-linkage Specific Ubiquitin |
| Formulation: | Rabbit IgG in phosphate buffered saline , pH 7.4, 150mM NaCl, 0.02% sodium azide and 50% glycerol. |
| Concentration: | lot specific |
| Purification: | Affinity Chromatography |
| Conjugation: | Unconjugated |
| Storage: | Store at 4°C short term. Aliquot and store at -20°C long term. Avoid freeze/thaw cycles. |
| Stability: | 1 year |
| Gene Name: | ubiquitin B |
| Database Link: | Entrez Gene 7314 Human P0CG47 |

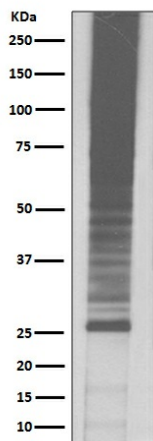
Background: Swiss-Prot Acc.P0CG47.Plays an important role in the ubiquitin-proteasome pathway. Ubiquitin can be covalently linked to many cellular proteins by the ubiquitination process, which targets proteins for degradation by the 26S proteasome. Three components are involved in the target protein-ubiquitin conjugation process. Ubiquitin is first activated by forming a thiolester complex with the activation component E1; the activated ubiquitin is subsequently transferred to the ubiquitin-carrier protein E2, then from E2 to ubiquitin ligase E3 for final delivery to the epsilon-NH2 of the target protein lysine residue.



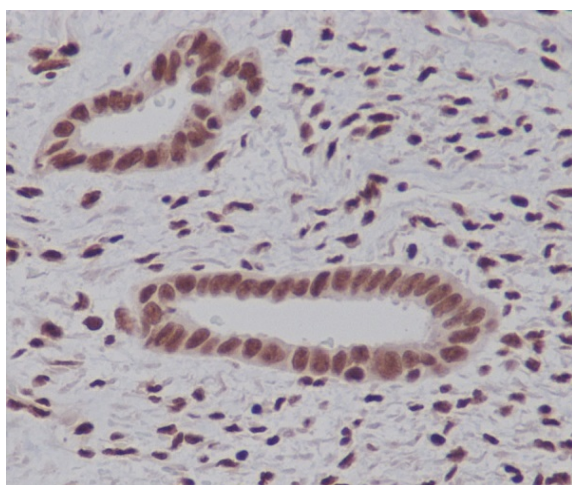
[View online »](#)

Synonyms: FLJ25987; MGC8385; OTTHUMP00000064960; OTTHUMP00000064961; UBA80; UBCEP1; UBCEP2

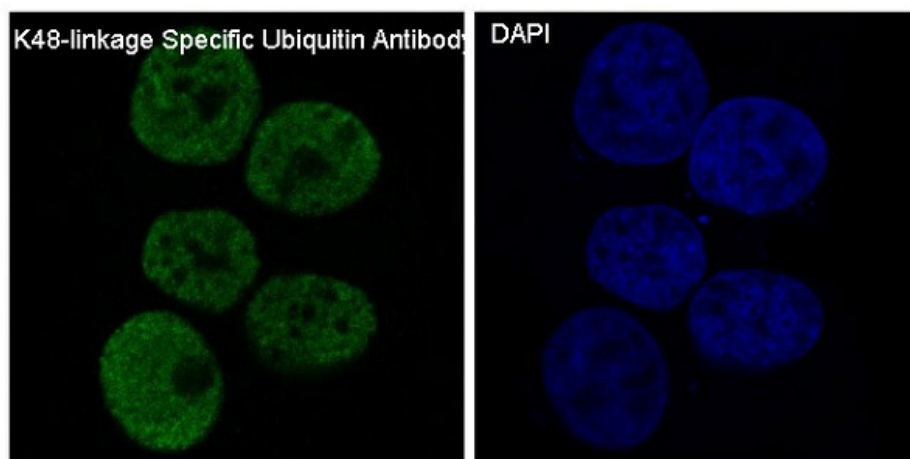
Product images:



Western blot analysis of Ubiquitin in Jurkat lysates using Ubiquitin K48 antibody.



Immunohistochemistry analysis of paraffin-embedded Human endometrium carcinoma using K48linkage Specific Ubiquitin antibody. High-pressure and temperature Sodium Citrate pH 6.0 was used for antigen retrieval.



Immunofluorescence analysis of Ubiquitin K48 in MCF-7 using K48linkage Specific Ubiquitin antibody.