

Product datasheet for **TA385504S**

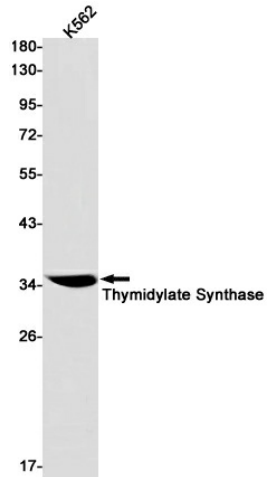
Thymidylate Synthase (TYMS) Rabbit Monoclonal Antibody [Clone ID: R08-2F2]

Product data:

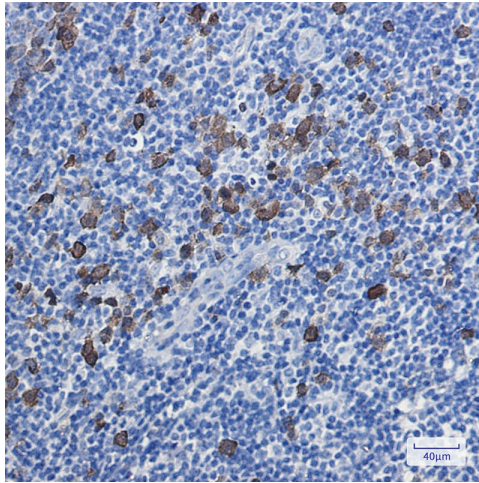
Product Type:	Primary Antibodies
Clone Name:	R08-2F2
Applications:	IF, IHC, IP, WB
Recommended Dilution:	WB: 1/1000-1/5000 IHC: 1/20-1/50 ICC/IF: 1/20-1/50 IP: 1/20-1/50
Reactivity:	Human
Host:	Rabbit
Isotype:	IgG
Clonality:	Monoclonal
Immunogen:	A synthetic peptide of human Thymidylate Synthase
Formulation:	50mM Tris-Glycine(pH 7.4), 0.15M NaCl, 40% Glycerol, 0.01% Sodium azide and 0.05% BSA
Concentration:	lot specific
Purification:	Affinity Purified
Conjugation:	Unconjugated
Storage:	Store at 4°C short term. Aliquot and store at -20°C long term. Avoid freeze/thaw cycles.
Stability:	1 year
Predicted Protein Size:	Calculated MW: 36 kDa; Observed MW: 36 kDa
Gene Name:	thymidylate synthetase
Database Link:	Entrez Gene 7298 Human P04818
Background:	Swiss-Prot Acc.P04818.Contributes to the de novo mitochondrial thymidylate biosynthesis pathway.
Synonyms:	HST422; MGC88736; TMS; TS; Tsase



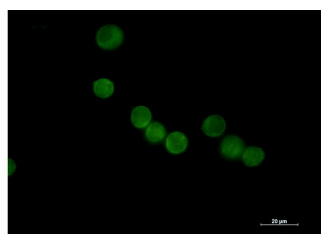
[View online »](#)

Product images:

Western blot analysis of Thymidylate Synthase in K562 lysates using Thymidylate Synthase antibody.



Immunohistochemistry analysis of paraffin-embedded Human tonsil using Thymidylate Synthase antibody. High-pressure and temperature Sodium Citrate pH 6.0 was used for antigen retrieval.



Immunocytochemistry analysis of Thymidylate Synthase (green) in Jurkat using Thymidylate Synthase antibody, and DAPI (blue).