

Product datasheet for **TA385503**

Thymidylate Synthase (TYMS) Rabbit Polyclonal Antibody

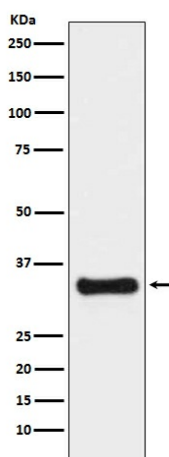
Product data:

Product Type:	Primary Antibodies
Applications:	FC, IF, IHC, IP, WB
Recommended Dilution:	WB: 1/500-1/2000 IHC: 1/50-1/200 ICC/IF: 1/50-1/200 IP: 1/50 FC: 1/50
Reactivity:	Human, Mouse, Rat
Host:	Rabbit
Isotype:	IgG
Clonality:	Polyclonal
Immunogen:	A synthesized peptide derived from human Thymidylate Synthase
Formulation:	Rabbit IgG in phosphate buffered saline , pH 7.4, 150mM NaCl, 0.02% sodium azide and 50% glycerol.
Concentration:	lot specific
Purification:	Affinity Chromatography
Conjugation:	Unconjugated
Storage:	Store at 4°C short term. Aliquot and store at -20°C long term. Avoid freeze/thaw cycles.
Stability:	1 year
Predicted Protein Size:	36kDa
Gene Name:	thymidylate synthetase
Database Link:	Entrez Gene 7298 Human P04818
Background:	Swiss-Prot Acc.P04818.Contributes to the de novo mitochondrial thymidylate biosynthesis pathway.
Synonyms:	HST422; MGC88736; TMS; TS; Tsase



[View online »](#)

Product images:



Western blot analysis of Thymidylate Synthase in HeLa lysates using Thymidylate Synthase antibody.