

Product datasheet for **TA385500M**

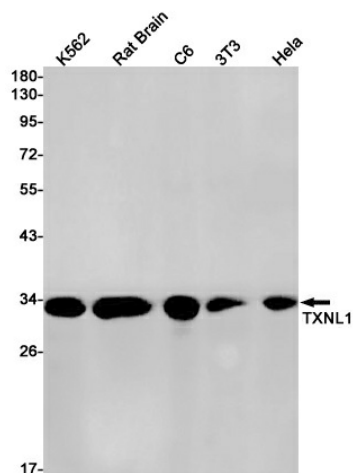
TXNL1 Rabbit Monoclonal Antibody [Clone ID: R06-8C2]

Product data:

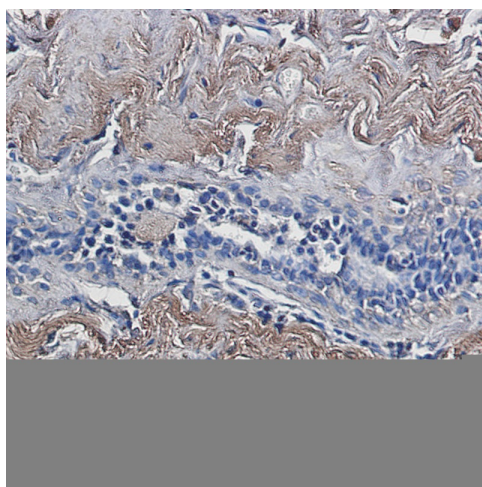
Product Type:	Primary Antibodies
Clone Name:	R06-8C2
Applications:	IF, IHC, WB
Recommended Dilution:	WB: 1/1000-1/5000 IHC: 1/20 ICC/IF: 1/20
Reactivity:	Human, Mouse, Rat
Host:	Rabbit
Isotype:	IgG
Clonality:	Monoclonal
Immunogen:	A synthetic peptide of human TXNL1
Formulation:	50mM Tris-Glycine(pH 7.4), 0.15M NaCl, 40% Glycerol, 0.01% Sodium azide and 0.05% BSA
Concentration:	lot specific
Purification:	Affinity Purified
Conjugation:	Unconjugated
Storage:	Store at 4°C short term. Aliquot and store at -20°C long term. Avoid freeze/thaw cycles.
Stability:	1 year
Predicted Protein Size:	Calculated MW: 32 kDa; Observed MW: 32 kDa
Gene Name:	thioredoxin like 1
Database Link:	Entrez Gene 9352 Human O43396
Background:	Swiss-Prot Acc.O43396.Active thioredoxin with a redox potential of about -250 mV.
Synonyms:	TRP32; TxI; TXL-1; TXNL

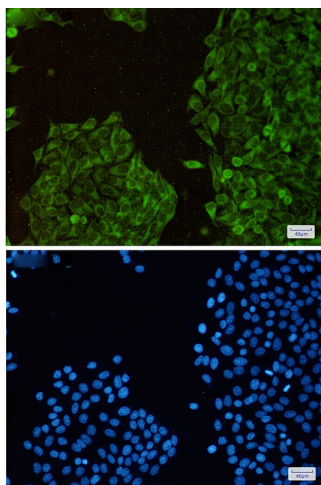

[View online »](#)

Product images:



Western blot analysis of TXNL1 in K562, rat Brain, C6, 3T3, HeLa lysates using Thio redoxin Like Protein 1 antibody.





Immunocytochemistry analysis of TXNL1(green) in Hela using TXNL1 antibody,and DAPI(blue)