

## Product datasheet for **TA385500**

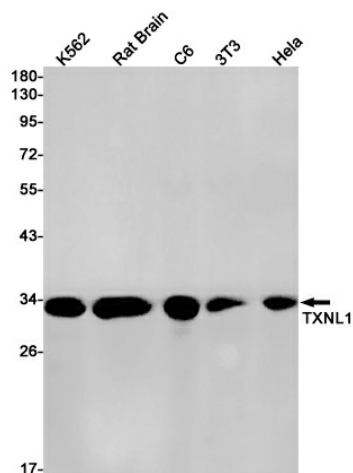
### **TXNL1 Rabbit Monoclonal Antibody [Clone ID: R06-8C2]**

#### **Product data:**

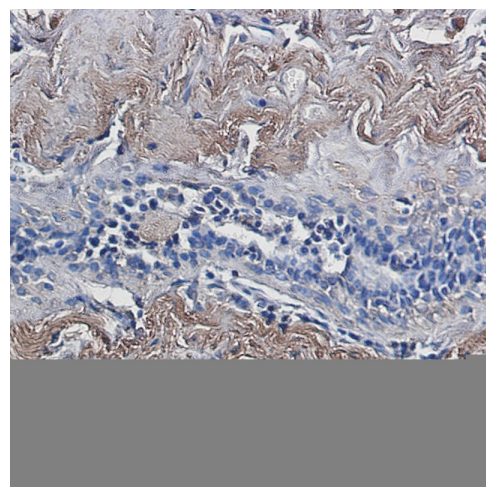
<b>Product Type:</b>	Primary Antibodies
<b>Clone Name:</b>	R06-8C2
<b>Applications:</b>	IF, IHC, WB
<b>Recommended Dilution:</b>	WB: 1/1000-1/5000 IHC: 1/20 ICC/IF: 1/20
<b>Reactivity:</b>	Human, Mouse, Rat
<b>Host:</b>	Rabbit
<b>Isotype:</b>	IgG
<b>Clonality:</b>	Monoclonal
<b>Immunogen:</b>	A synthetic peptide of human TXNL1
<b>Formulation:</b>	50mM Tris-Glycine(pH 7.4), 0.15M NaCl, 40% Glycerol, 0.01% Sodium azide and 0.05% BSA
<b>Concentration:</b>	lot specific
<b>Purification:</b>	Affinity Purified
<b>Conjugation:</b>	Unconjugated
<b>Storage:</b>	Store at 4°C short term. Aliquot and store at -20°C long term. Avoid freeze/thaw cycles.
<b>Stability:</b>	1 year
<b>Predicted Protein Size:</b>	Calculated MW: 32 kDa; Observed MW: 32 kDa
<b>Gene Name:</b>	thioredoxin like 1
<b>Database Link:</b>	<a href="#">Entrez Gene 9352 Human O43396</a>
<b>Background:</b>	Swiss-Prot Acc.O43396.Active thioredoxin with a redox potential of about -250 mV.
<b>Synonyms:</b>	TRP32; TxI; TXL-1; TXNL



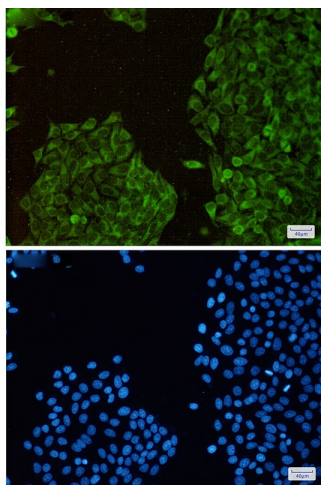
[View online »](#)

**Product images:**

Western blot analysis of TXNL1 in K562, rat Brain, C6, 3T3, HeLa lysates using Thioredoxin Like Protein 1 antibody.



Immunohistochemistry analysis of paraffin-embedded Human breast cancer using TXNL1 antibody. High-pressure and temperature Sodium Citrate pH 6.0 was used for antigen retrieval.



Immunocytochemistry analysis of TXNL1(green) in HeLa using TXNL1 antibody, and DAPI(blue)