

## Product datasheet for **TA385499M**

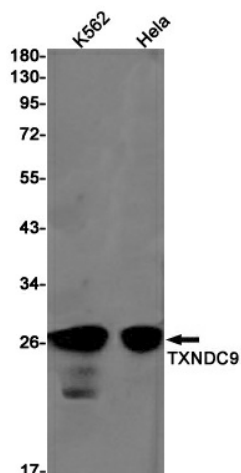
### Thioredoxin domain containing 9 (TXNDC9) Rabbit Monoclonal Antibody [Clone ID: R04-4H8]

#### Product data:

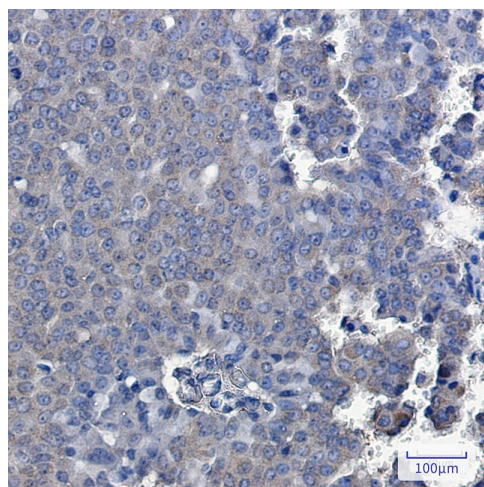
Product Type:	Primary Antibodies
Clone Name:	R04-4H8
Applications:	IHC, WB
Recommended Dilution:	WB: 1/1000 IHC: 1/20
Reactivity:	Human
Host:	Rabbit
Isotype:	IgG
Clonality:	Monoclonal
Immunogen:	A synthetic peptide of human TXNDC9
Formulation:	50mM Tris-Glycine(pH 7.4), 0.15M NaCl, 40% Glycerol, 0.01% Sodium azide and 0.05% BSA
Concentration:	lot specific
Purification:	Affinity Purified
Conjugation:	Unconjugated
Storage:	Store at 4°C short term. Aliquot and store at -20°C long term. Avoid freeze/thaw cycles.
Stability:	1 year
Predicted Protein Size:	Calculated MW: 27 kDa; Observed MW: 27 kDa
Gene Name:	thioredoxin domain containing 9
Database Link:	<a href="#">Entrez Gene 10190 Human O14530</a>
Background:	Swiss-Prot Acc.O14530.Significantly diminishes the chaperonin TCP1 complex ATPase activity, thus negatively impacts protein folding, including that of actin or tubulin.
Synonyms:	APACD; PHLP3


[View online »](#)

## Product images:



Western blot analysis of TXNDC9 in K562, HeLa lysates using TXNDC9 antibody.



Immunohistochemistry analysis of paraffin-embedded Human breast cancer using TXNDC9 antibody. High-pressure and temperature Sodium Citrate pH 6.0 was used for antigen retrieval.