

Product datasheet for **TA385497M**

Thioredoxin 2 (TXN2) Rabbit Monoclonal Antibody [Clone ID: R01-7C7]

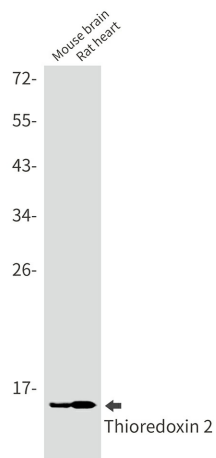
Product data:

Product Type:	Primary Antibodies
Clone Name:	R01-7C7
Applications:	IF, IHC, WB
Recommended Dilution:	WB: 1/2000-1/10000 IHC: 1/50 ICC/IF: 1/50
Reactivity:	Human, Mouse, Rat
Host:	Rabbit
Isotype:	IgG
Clonality:	Monoclonal
Immunogen:	A synthetic peptide of human Thioredoxin 2
Formulation:	50mM Tris-Glycine(pH 7.4), 0.15M NaCl, 40% Glycerol, 0.01% Sodium azide and 0.05% BSA
Concentration:	lot specific
Purification:	Affinity Purified
Conjugation:	Unconjugated
Storage:	Store at 4°C short term. Aliquot and store at -20°C long term. Avoid freeze/thaw cycles.
Stability:	1 year
Predicted Protein Size:	Calculated MW: 18 kDa; Observed MW: 13 kDa
Gene Name:	thioredoxin 2
Database Link:	Entrez Gene 25828 Human Q99757
Background:	Swiss-Prot Acc.Q99757.Important for the control of mitochondrial reactive oxygen species homeostasis, apoptosis regulation and cell viability. Possesses a dithiol-reducing activity.
Synonyms:	MT-TRX; MTRX; OTTHUMP00000197898; Thioredoxin-2; TRX2

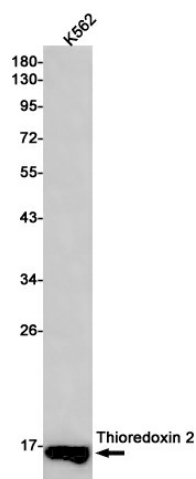


[View online »](#)

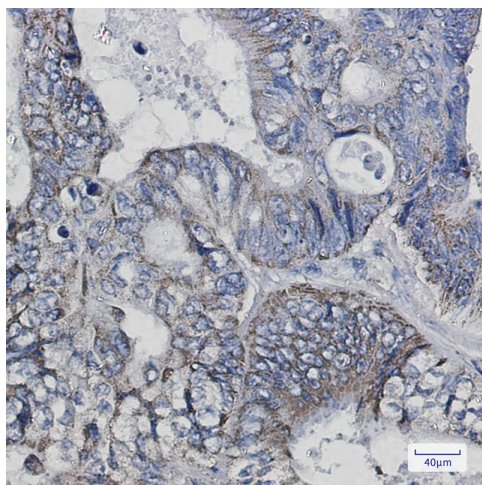
Product images:



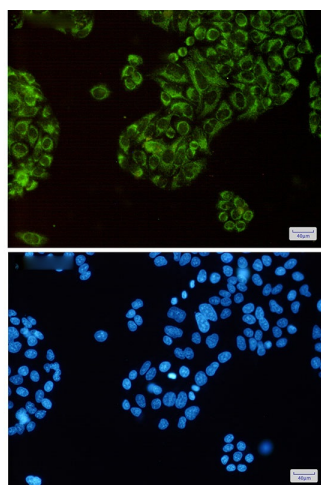
Western blot analysis of Thioredoxin 2 in mouse brain, rat heart lysates using Thioredoxin 2 antibody.



Western blot analysis of Thioredoxin 2 in K562 lysates using Thioredoxin 2 antibody.



Immunohistochemistry analysis of paraffin-embedded Human colon cancer using Thioredoxin 2 antibody. High-pressure and temperature Sodium Citrate pH 6.0 was used for antigen retrieval.



Immunocytochemistry analysis of Thioredoxin 2 (green) in HeLa using Thioredoxin 2 antibody, and DAPI (blue)