

Product datasheet for **TA385496**

Thioredoxin 2 (TXN2) Rabbit Polyclonal Antibody

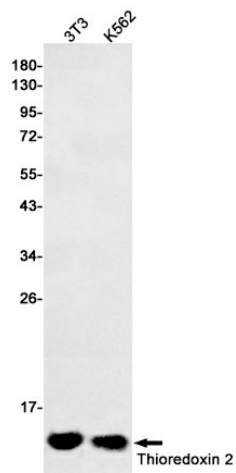
Product data:

Product Type:	Primary Antibodies
Applications:	FC, IF, IHC, WB
Recommended Dilution:	WB: 1/1000-1/5000 IHC: 1/50-1/200 ICC/IF: 1/50-1/200 FC: 1/100
Reactivity:	Human, Mouse, Rat
Host:	Rabbit
Isotype:	IgG
Clonality:	Polyclonal
Immunogen:	A synthesized peptide derived from human Thioredoxin 2
Formulation:	Rabbit IgG in phosphate buffered saline , pH 7.4, 150mM NaCl, 0.02% sodium azide and 50% glycerol.
Concentration:	lot specific
Purification:	Affinity Chromatography
Conjugation:	Unconjugated
Storage:	Store at 4°C short term. Aliquot and store at -20°C long term. Avoid freeze/thaw cycles.
Stability:	1 year
Predicted Protein Size:	12kDa
Gene Name:	thioredoxin 2
Database Link:	Entrez Gene 25828 Human Q99757
Background:	Swiss-Prot Acc.Q99757.Thioredoxins (Trx) are small, multi-functional proteins with oxidoreductase activity and are ubiquitous in essentially all living cells. Trx contains a redox-active disulfide/dithiol group within the conserved Cys-Gly-Pro-Cys active site.
Synonyms:	MT-TRX; MTRX; OTTHUMP00000197898; Thioredoxin-2; TRX2



[View online »](#)

Product images:



Western blot analysis of Thioredoxin 2 in 3T3, K562 lysates using Thioredoxin 2 antibody.