

## Product datasheet for **TA385495**

### gamma Tubulin (TUBG1) Rabbit Polyclonal Antibody

#### Product data:

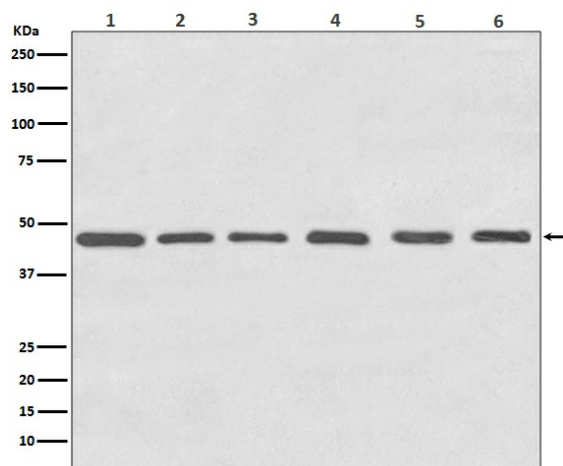
|                         |  |
|-------------------------|--|
| Product Type:           | Primary Antibodies   |
| Applications:           | FC, IF, IHC, IP, WB  |
| Recommended Dilution:   | WB: 1/500-1/2000<br>IHC: 1/50-1/200<br>ICC/IF: 1/50-1/200<br>IP: 1/50<br>FC: 1/50  |
| Reactivity:             | Human, Mouse, Rat, Monkey, Chicken, Hamster, Cow, Dog, Fish, Xenopus   |
| Host:                   | Rabbit   |
| Isotype:                | IgG  |
| Clonality:              | Polyclonal   |
| Immunogen:              | A synthesized peptide derived from human Tubulin gamma   |
| Formulation:            | Rabbit IgG in phosphate buffered saline , pH 7.4, 150mM NaCl, 0.02% sodium azide and 50% glycerol.   |
| Concentration:          | lot specific   |
| Purification:           | Affinity Chromatography  |
| Conjugation:            | Unconjugated   |
| Storage:                | Store at 4°C short term. Aliquot and store at -20°C long term. Avoid freeze/thaw cycles.   |
| Stability:              | 1 year   |
| Predicted Protein Size: | 48kDa  |
| Gene Name:              | tubulin gamma 1  |
| Database Link:          | <a href="#">Entrez Gene 7283 Human P23258</a>  |
| Background:             | Swiss-Prot Acc.P23258.TUBG1 Tubulin is the major constituent of microtubules. Gamma tubulin is found at microtubule organizing centers (MTOC) such as the spindle poles or the centrosome. Pericentriolar matrix component that regulates alpha/beta tubulin minus-end nucleation, centrosome duplication and spindle formation. Interacts with GCP2 and GCP3. Interacts with B9D2. Interacts with CDK5RAP2; |



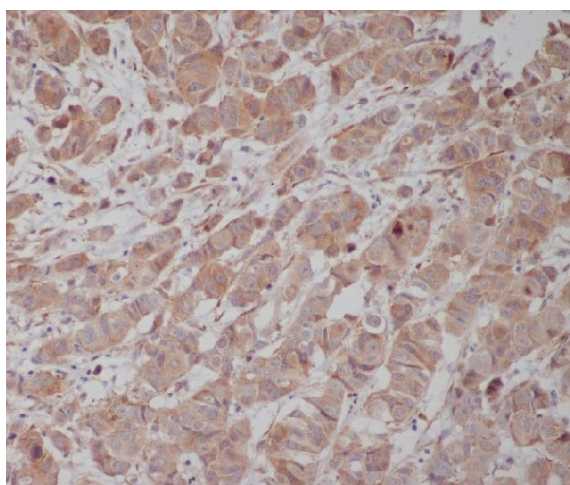
[View online »](#)

Synonyms: Gamma-1-tubulin; GCP-1; TUBG; TUBGCP1

### Product images:



Western blot analysis of Tubulin gamma in (1) HeLa lysates; (2) NIH 3T3 lysates; (3) C6 lysates; (4) Zebrafish lysates; (5) COS1 lysates; (6) MDCK lysates using gamma Tubulin antibody.



Immunohistochemistry analysis of paraffin-embedded Human breast cancer using Tubulin gamma antibody. High-pressure and temperature Sodium Citrate pH 6.0 was used for antigen retrieval.