

Product datasheet for **TA385494**

gamma Tubulin (TUBG1) Mouse Monoclonal Antibody [Clone ID: 6A10-3A10-2A6]

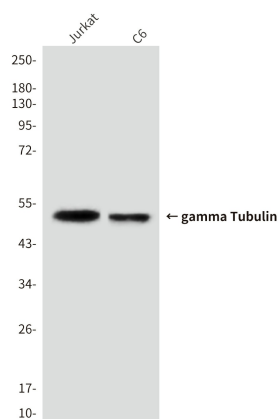
Product data:

Product Type:	Primary Antibodies
Clone Name:	6A10-3A10-2A6
Applications:	IHC, WB
Recommended Dilution:	WB: 1/1000-2000 IHC: 1/100-200
Reactivity:	Human, Rat, Mouse
Host:	Mouse
Isotype:	IgG1
Clonality:	Monoclonal
Immunogen:	Synthetic peptide conjugated to KLH.
Formulation:	Liquid in PBS containing 50% glycerol, 0.5% BSA and 0.03% Proclin 300, pH 7.3.
Concentration:	lot specific
Purification:	Affinity Purified
Conjugation:	Unconjugated
Storage:	Store at 4°C short term. Aliquot and store at -20°C long term. Avoid freeze/thaw cycles.
Stability:	1 year
Predicted Protein Size:	50kDa
Gene Name:	tubulin gamma 1
Database Link:	Entrez Gene 7283 Human P23258
Background:	Swiss-Prot Acc.P23258.Tubulin is the major constituent of microtubules. The gamma chain is found at microtubule organizing centers (MTOC) such as the spindle poles or the centrosome. Pericentriolar matrix component that regulates alpha/beta chain minus-end nucleation, centrosome duplication and spindle formation.RegionsFeature keyPosition(s)Description
Synonyms:	Gamma-1-tubulin; GCP-1; TUBG; TUBGCP1

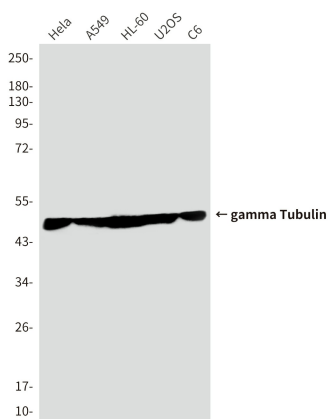


[View online »](#)

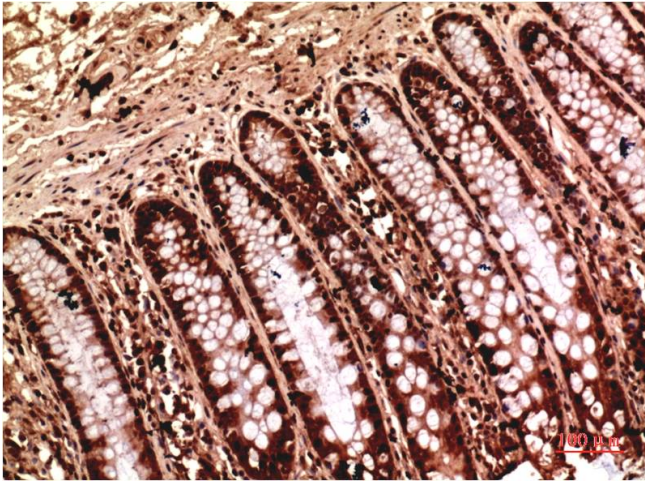
Product images:



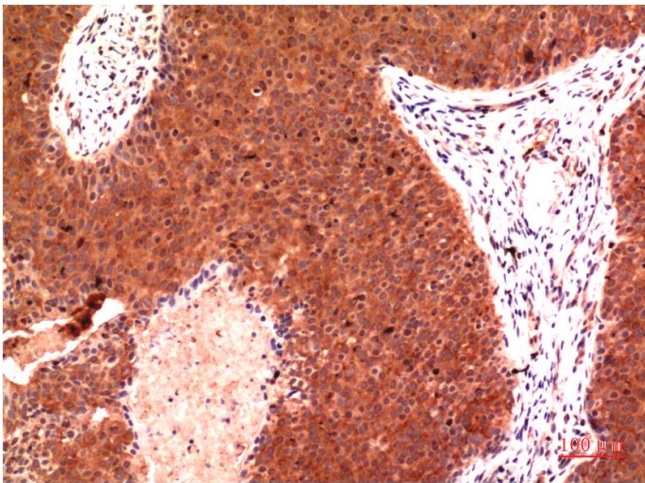
Western blot analysis of gamma Tubulin (6A10) in Jurkat, C6 lysates using gamma Tubulin (6A10) antibody



Western blot analysis of gamma Tubulin (6A10) in HeLa, A549, HL-60, U2OS, C6 lysates using gamma Tubulin (6A10) antibody.



Immunohistochemistry analysis of paraffin-embedded Human Colon Carcinoma Tissue using gamma Tubulin (6A10) antibody. High-pressure and temperature Sodium Citrate pH 6.0 was used for antigen retrieval.



Immunohistochemical analysis of paraffin-embedded Human tonsils using gamma Tubulin (6A10) antibody. High-pressure and temperature Sodium Citrate pH 6.0 was used for antigen retrieval.