

## Product datasheet for **TA385491**

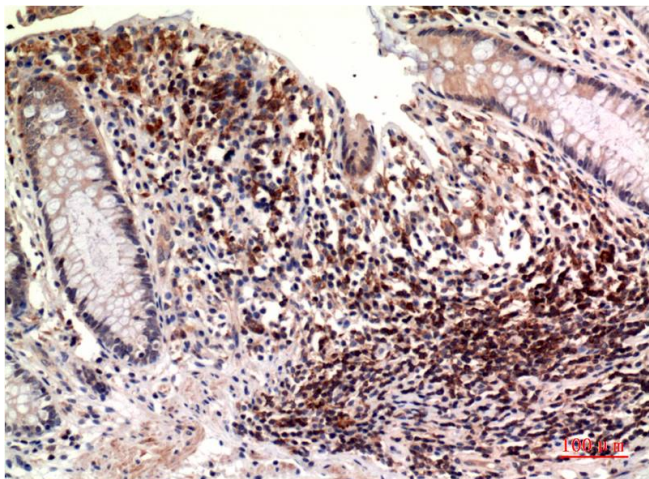
### epsilon Tubulin (TUBE1) Mouse Monoclonal Antibody [Clone ID: 7D3-7D4-9B2]

#### Product data:

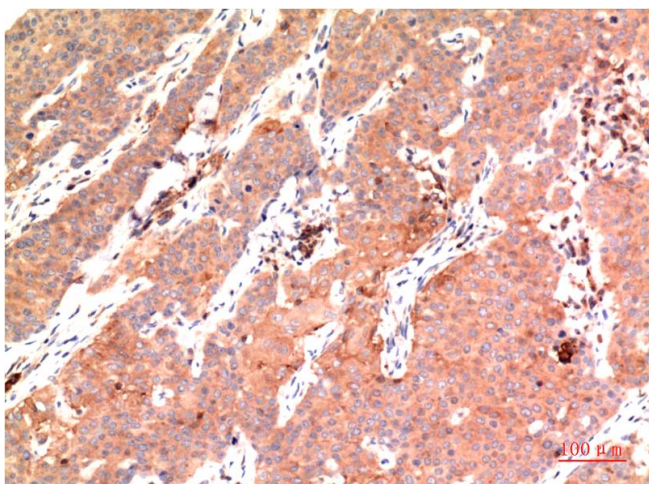
Product Type:	Primary Antibodies
Clone Name:	7D3-7D4-9B2
Applications:	IHC
Recommended Dilution:	IHC: 1/100-200
Reactivity:	Human, Rat, Mouse
Host:	Mouse
Isotype:	IgG1
Clonality:	Monoclonal
Immunogen:	Synthetic peptide conjugated to KLH.
Formulation:	Liquid in PBS containing 50% glycerol, 0.5% BSA and 0.03% Proclin 300, pH 7.3.
Concentration:	lot specific
Purification:	Affinity Purified
Conjugation:	Unconjugated
Storage:	Store at 4°C short term. Aliquot and store at -20°C long term. Avoid freeze/thaw cycles.
Stability:	1 year
Predicted Protein Size:	55kDa
Gene Name:	tubulin epsilon 1
Database Link:	<a href="#">Entrez Gene 51175 Human Q9UJT0</a>
Background:	Swiss-Prot Acc.Q9UJT0.RegionsFeature keyPosition(s)Description
Synonyms:	dj142L7.2; Epsilon-tubulin; FLJ22589; FLJ44203; TUBE



[View online »](#)

**Product images:**

Immunohistochemistry analysis of paraffin-embedded Human Colon Carcinoma Tissue using epsilon Tubulin (7D3) antibody. High-pressure and temperature Sodium Citrate pH 6.0 was used for antigen retrieval.



Immunohistochemical analysis of paraffin-embedded Human tonsils using epsilon Tubulin (7D3) antibody. High-pressure and temperature Sodium Citrate pH 6.0 was used for antigen retrieval.