

## Product datasheet for TA385489M

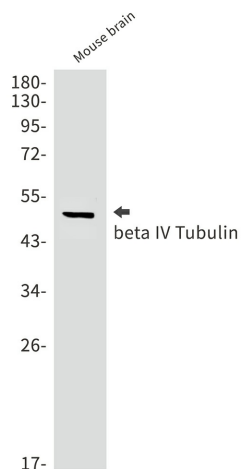
### beta IV Tubulin (TUBB4A) Rabbit Monoclonal Antibody [Clone ID: R06-6A5]

#### Product data:

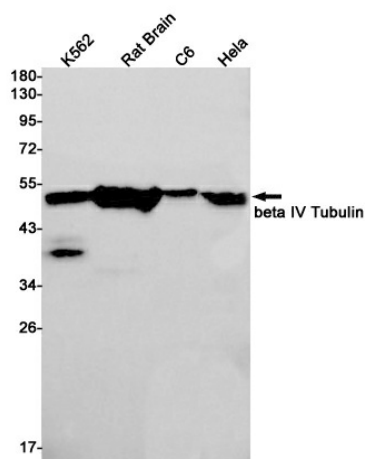
Product Type:	Primary Antibodies
Clone Name:	R06-6A5
Applications:	IF, IHC, WB
Recommended Dilution:	WB: 1/1000 IHC: 1/200 ICC/IF: 1/100
Reactivity:	Human, Mouse, Rat
Host:	Rabbit
Isotype:	IgG
Clonality:	Monoclonal
Immunogen:	A synthetic peptide of human beta IV Tubulin
Formulation:	50mM Tris-Glycine(pH 7.4), 0.15M NaCl, 40% Glycerol, 0.01% Sodium azide and 0.05% BSA
Concentration:	lot specific
Purification:	Affinity Purified
Conjugation:	Unconjugated
Storage:	Store at 4°C short term. Aliquot and store at -20°C long term. Avoid freeze/thaw cycles.
Stability:	1 year
Predicted Protein Size:	Calculated MW: 50 kDa; Observed MW: 50 kDa
Gene Name:	tubulin beta 4A class IVa
Database Link:	<a href="#">Entrez Gene 10382 Human P04350</a>
Background:	Swiss-Prot Acc.P04350.Tubulin is the major constituent of microtubules. It binds two moles of GTP, one at an exchangeable site on the beta chain and one at a non-exchangeable site on the alpha chain.RegionsFeature keyPosition(s)Description
Synonyms:	A1325297; M(beta)4; Tubb; Tubb4


[View online »](#)

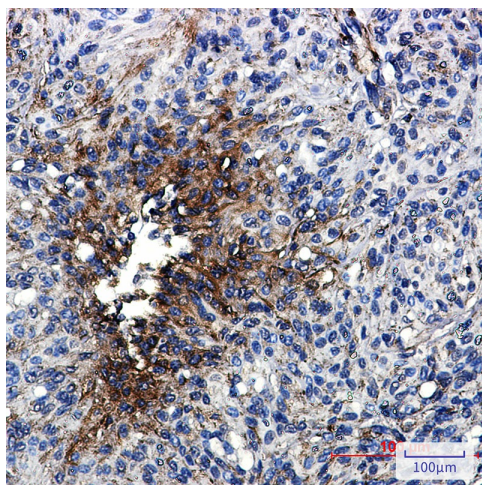
## Product images:



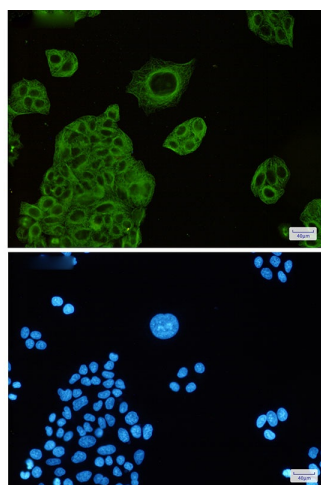
Western blot analysis of beta IV Tubulin in mouse brain lysates using beta IV Tubulin antibody.



Western blot analysis of beta IV Tubulin in K562, rat Brain, C6, HeLa lysates using beta IV Tubulin antibody.



Immunohistochemistry analysis of paraffin-embedded Human brain using beta IV Tubulin antibody. High-pressure and temperature Sodium Citrate pH 6.0 was used for antigen retrieval.



Immunocytochemistry analysis of beta IV Tubulin (green) in HeLa using beta IV Tubulin antibody and DAPI (blue)