

## Product datasheet for **TA385488**

### beta III Tubulin (TUBB3) Rabbit Monoclonal Antibody [Clone ID: R08-6A3]

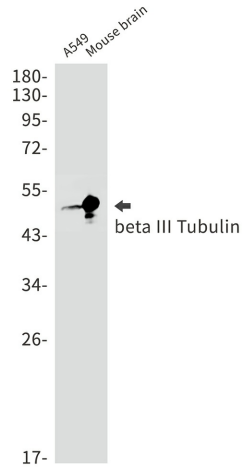
#### Product data:

Product Type:	Primary Antibodies
Clone Name:	R08-6A3
Applications:	IF, IHC, IP, WB
Recommended Dilution:	WB: 1/1000-1/5000 IHC: 1/20-1/50 ICC/IF: 1/50-1/100 IP: 1/20
Reactivity:	Human, Mouse, Rat
Host:	Rabbit
Isotype:	IgG
Clonality:	Monoclonal
Immunogen:	A synthetic peptide of human beta III Tubulin
Formulation:	50mM Tris-Glycine(pH 7.4), 0.15M NaCl, 40% Glycerol, 0.01% Sodium azide and 0.05% BSA
Concentration:	lot specific
Purification:	Affinity Purified
Conjugation:	Unconjugated
Storage:	Store at 4°C short term. Aliquot and store at -20°C long term. Avoid freeze/thaw cycles.
Stability:	1 year
Predicted Protein Size:	Calculated MW: 50 kDa; Observed MW: 50 kDa
Gene Name:	tubulin beta 3 class III
Database Link:	<a href="#">Entrez Gene 10381 Human Q13509</a>
Background:	Swiss-Prot Acc.Q13509.Tubulin is the major constituent of microtubules. It binds two moles of GTP, one at an exchangeable site on the beta chain and one at a non-exchangeable site on the alpha chain. TUBB3 plays a critical role in proper axon guidance and maintenance.
Synonyms:	beta-4; MC1R; TUBB4

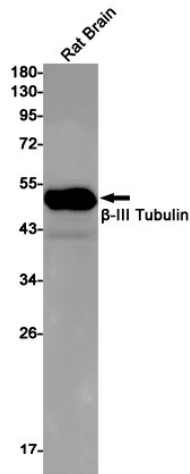


[View online »](#)

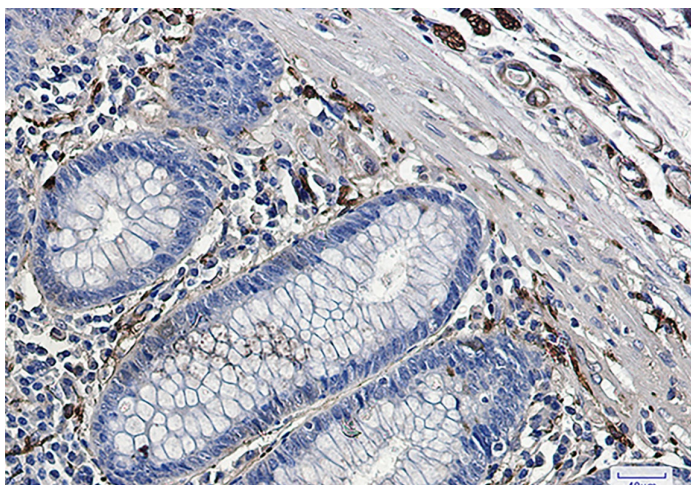
Product images:



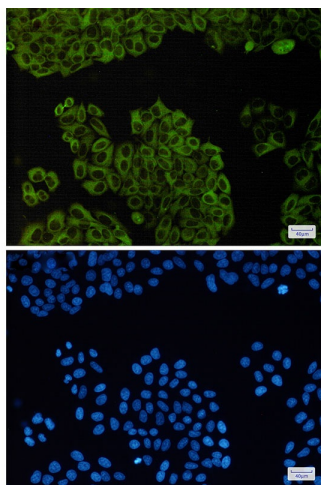
Western blot analysis of beta III Tubulin in A549, mouse brain lysates using beta III Tubulin antibody.



Western blot analysis of beta III Tubulin in rat Brain lysates using beta III Tubulin antibody.



Immunohistochemistry analysis of paraffin-embedded Human colon cancer using beta III Tubulin antibody. High-pressure and temperature Sodium Citrate pH 6.0 was used for antigen retrieval.



Immunocytochemistry analysis of beta III Tubulin (green) in HeLa using beta III Tubulin antibody, and DAPI (blue)