

## Product datasheet for **TA385487S**

### alpha Tubulin (TUBA4A) Rabbit Monoclonal Antibody [Clone ID: R02-2H3]

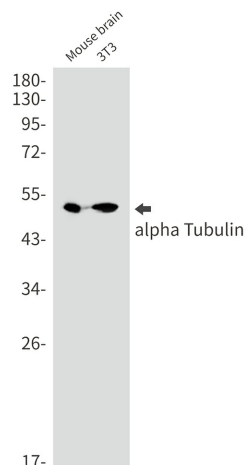
#### Product data:

Product Type:	Primary Antibodies
Clone Name:	R02-2H3
Applications:	IF, IHC, IP, WB
Recommended Dilution:	WB: 1/2000 IHC: 1/20 ICC/IF: 1/20 IP: 1/20
Reactivity:	Human, Mouse, Rat, Hamster
Host:	Rabbit
Isotype:	IgG
Clonality:	Monoclonal
Immunogen:	A synthetic peptide of human alpha Tubulin
Formulation:	50mM Tris-Glycine(pH 7.4), 0.15M NaCl, 40% Glycerol, 0.01% Sodium azide and 0.05% BSA
Concentration:	lot specific
Purification:	Affinity Purified
Conjugation:	Unconjugated
Storage:	Store at 4°C short term. Aliquot and store at -20°C long term. Avoid freeze/thaw cycles.
Stability:	1 year
Predicted Protein Size:	Calculated MW: 50 kDa; Observed MW: 50 kDa
Gene Name:	tubulin alpha 4a
Database Link:	<a href="#">Entrez Gene 7277 Human P68366</a>
Background:	Swiss-Prot Acc.P68366.Tubulin is the major constituent of microtubules. It binds two moles of GTP, one at an exchangeable site on the beta chain and one at a non-exchangeable site on the alpha chain.MiscellaneousThis tubulin does not have a C-terminal tyrosine.RegionsFeature keyPosition(s)Description
Synonyms:	FLJ30169; H2-ALPHA; TUBA1

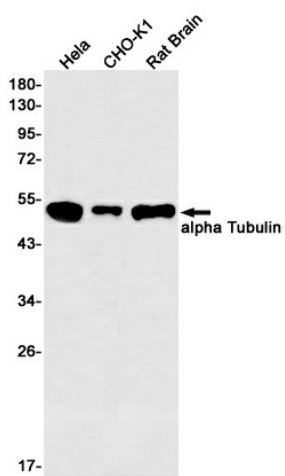


[View online »](#)

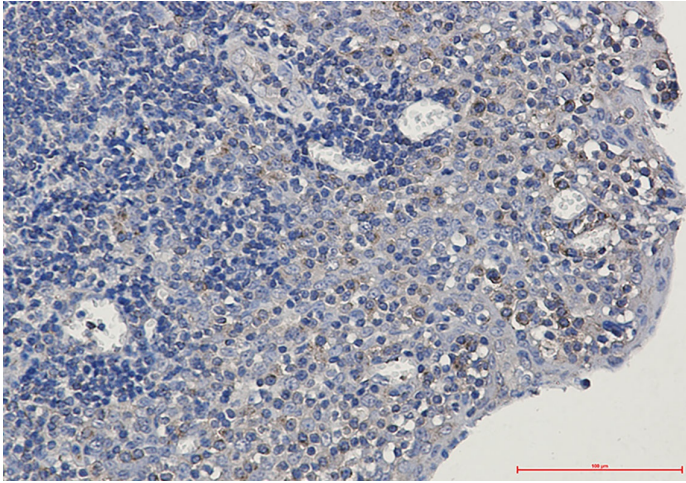
## Product images:



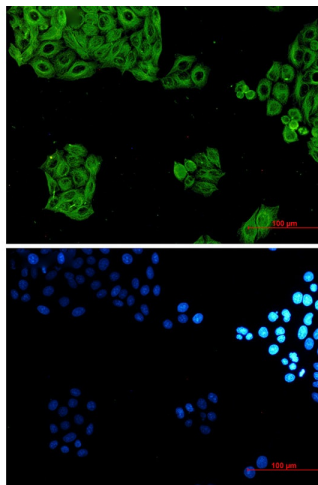
Western blot analysis of alpha Tubulin in mouse brain, 3T3 lysates using alpha Tubulin antibody.



Western blot analysis of alpha Tubulin in HeLa, CHO-K1, rat Brain lysates using alpha Tubulin antibody.



Immunohistochemistry analysis of paraffin-embedded Human tonsil using alpha Tubulin antibody. High-pressure and temperature Sodium Citrate pH 6.0 was used for antigen retrieval.



Immunocytochemistry analysis of alpha Tubulin (green) in hela using alpha Tubulin antibody, and DAPI (blue).