

## Product datasheet for **TA385486**

### alpha Tubulin (TUBA4A) Mouse Monoclonal Antibody [Clone ID: 6B5-1G7-3F9]

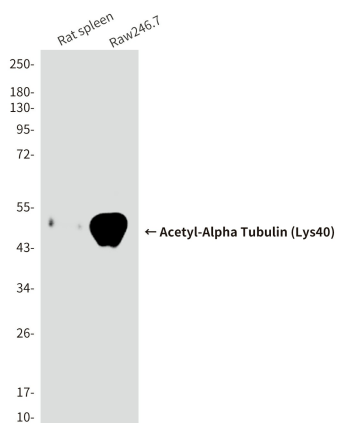
#### Product data:

Product Type:	Primary Antibodies
Clone Name:	6B5-1G7-3F9
Applications:	IHC, WB
Recommended Dilution:	WB: 1/1000-2000 IHC: 1/100-200
Reactivity:	Human, Rat, Mouse
Host:	Mouse
Isotype:	IgG1
Clonality:	Monoclonal
Immunogen:	Synthetic peptide conjugated to KLH. (Acetylated)
Formulation:	Liquid in PBS containing 50% glycerol, 0.5% BSA and 0.03% Proclin 300, pH 7.3.
Concentration:	lot specific
Purification:	Affinity Purified
Conjugation:	Unconjugated
Storage:	Store at 4°C short term. Aliquot and store at -20°C long term. Avoid freeze/thaw cycles.
Stability:	1 year
Predicted Protein Size:	52kDa
Gene Name:	tubulin alpha 4a
Database Link:	<a href="#">Entrez Gene 7277 Human P68363</a>
Background:	Swiss-Prot Acc.P68363.Tubulin is the major constituent of microtubules. It binds two moles of GTP, one at an exchangeable site on the beta chain and one at a non-exchangeable site on the alpha chain.SitesFeature keyPosition(s)Description
Synonyms:	FLJ30169; H2-ALPHA; TUBA1

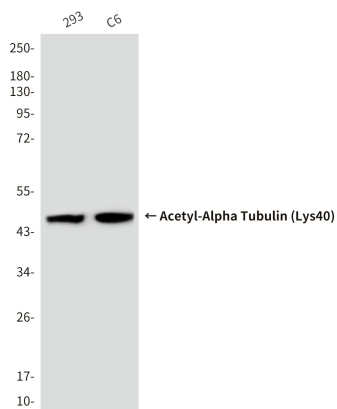


[View online »](#)

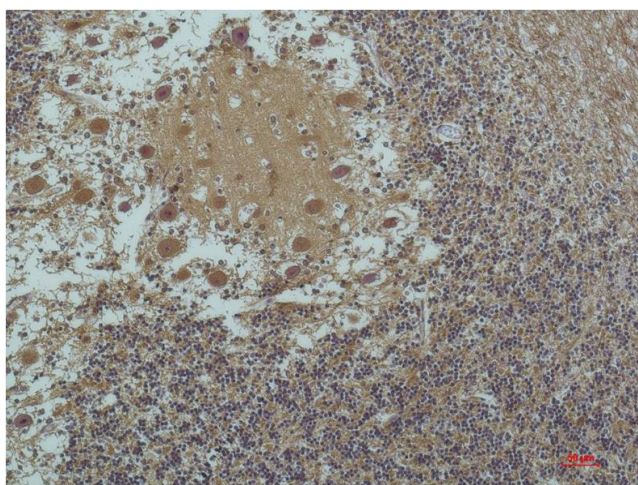
## Product images:



Western blot analysis of Acetyl- $\alpha$ -Tubulin (Lys40) in rat spleen, Raw246.7 lysates using Acetyl- $\alpha$ -Tubulin (Lys40) (6B5) antibody.



Western blot analysis of Acetyl- $\alpha$ -Tubulin (Lys40) (6B5) in 293, C6 lysates using Acetyl- $\alpha$ -Tubulin (Lys40) (6B5) antibody.



Immunohistochemistry analysis of paraffin-embedded Human Brain Tissue using alpha-tubulin(Acetyl Lys4) antibody. High-pressure and temperature Sodium Citrate pH 6.0 was used for antigen retrieval.