

Product datasheet for **TA385485**

alpha Tubulin (TUBA4A) Mouse Monoclonal Antibody [Clone ID: 9B8-3C2-4G7]

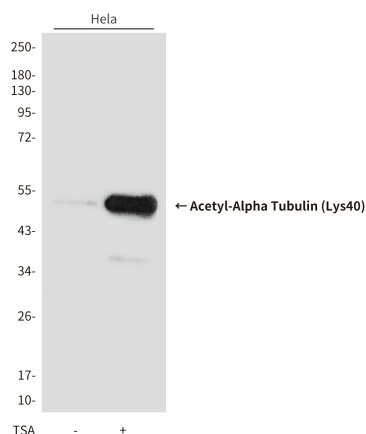
Product data:

Product Type:	Primary Antibodies
Clone Name:	9B8-3C2-4G7
Applications:	IHC, WB
Recommended Dilution:	WB: 1/1000-2000 IHC: 1/100-200
Reactivity:	Human, Rat, Mouse
Host:	Mouse
Isotype:	IgG1
Clonality:	Monoclonal
Immunogen:	Synthetic peptide conjugated to KLH. (Acetylated)
Formulation:	Liquid in PBS containing 50% glycerol, 0.5% BSA and 0.03% Proclin 300, pH 7.3.
Concentration:	lot specific
Purification:	Affinity Purified
Conjugation:	Unconjugated
Storage:	Store at 4°C short term. Aliquot and store at -20°C long term. Avoid freeze/thaw cycles.
Stability:	1 year
Predicted Protein Size:	52kDa
Gene Name:	tubulin alpha 4a
Database Link:	Entrez Gene 7277 Human P68363
Background:	Swiss-Prot Acc.P68363.Tubulin is the major constituent of microtubules. It binds two moles of GTP, one at an exchangeable site on the beta chain and one at a non-exchangeable site on the alpha chain.SitesFeature keyPosition(s)Description
Synonyms:	FLJ30169; H2-ALPHA; TUBA1

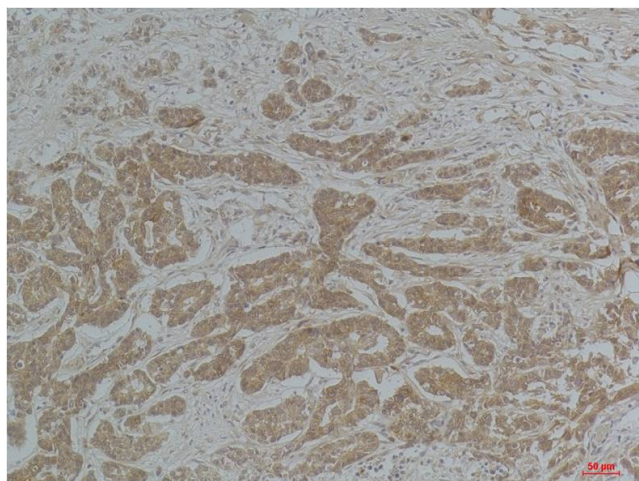


[View online »](#)

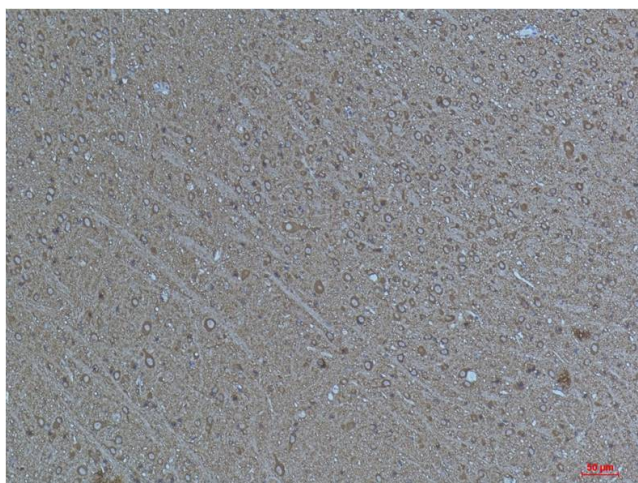
Product images:



Western blot analysis of Acetyl-Alpha Tubulin (Lys40) (9B8) in HeLa, untreated or treated with TSA (1 μ M, 18 hr; +), using Acetyl-Alpha Tubulin (Lys40) antibody.



Immunohistochemistry analysis of paraffin-embedded Human Breast Carcinoma using α -tubulin (Acetyl Lys40) antibody. High-pressure and temperature Sodium Citrate pH 6.0 was used for antigen retrieval.



Immunohistochemistry analysis of paraffin-embedded mouse Brain Tissue using α -tubulin(Acetyl Lys4) antibody. High-pressure and temperature Sodium Citrate pH 6.0 was used for antigen retrieval.