

## Product datasheet for **TA385484**

### alpha Tubulin (TUBA4A) Mouse Monoclonal Antibody [Clone ID: 4C7-3B1-10G4]

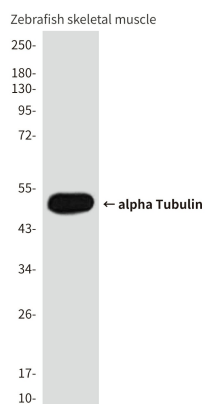
#### Product data:

Product Type:	Primary Antibodies
Clone Name:	4C7-3B1-10G4
Applications:	WB
Recommended Dilution:	WB: 1/500-10000
Reactivity:	Zebrafish
Host:	Mouse
Isotype:	IgG1
Clonality:	Monoclonal
Immunogen:	Recombinant Protein of Tubulin alpha-1A chain
Formulation:	Liquid in PBS containing 50% glycerol, 0.5% BSA and 0.03% Proclin 300, pH 7.3.
Concentration:	lot specific
Purification:	Affinity Purified
Conjugation:	Unconjugated
Storage:	Store at 4°C short term. Aliquot and store at -20°C long term. Avoid freeze/thaw cycles.
Stability:	1 year
Predicted Protein Size:	Observed MW (kDa):52
Gene Name:	tubulin alpha 4a
Database Link:	<a href="#">P68363</a>
Background:	Swiss-Prot Acc.P68363.Tubulin is the major constituent of microtubules. It binds two moles of GTP, one at an exchangeable site on the beta chain and one at a non-exchangeable site on the alpha chain.SitesFeature keyPosition(s)Description
Synonyms:	FLJ30169; H2-ALPHA; TUBA1

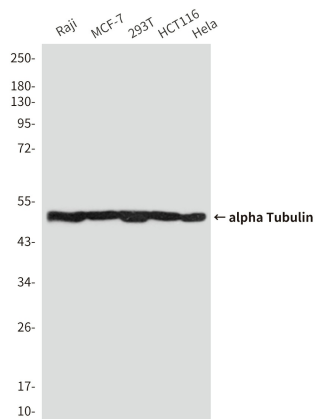


[View online »](#)

## Product images:



Western blot analysis of alpha Tubulin in Zebrafish skeletal muscle (Zebrafish Specific) using alpha Tubulin antibody.



Western blot analysis of alpha Tubulin (Zebrafish Specific) (4C7) in Raji, MCF-7, 293T, HCT116, HeLa lysates using  $\alpha$ Tubulin (Zebrafish Specific) (4C7) antibody.