

Product datasheet for **TA385483S**

alpha Tubulin (TUBA4A) Mouse Monoclonal Antibody [Clone ID: 4C9-6H6-4F7]

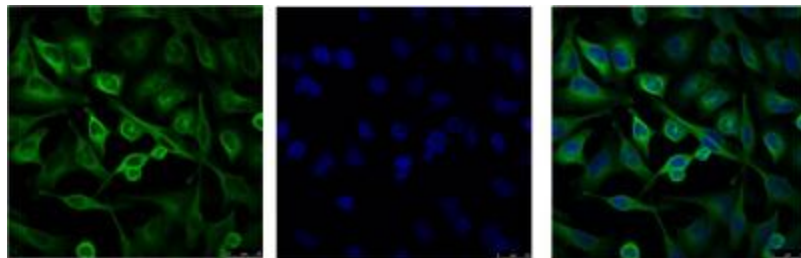
Product data:

Product Type:	Primary Antibodies
Clone Name:	4C9-6H6-4F7
Applications:	IF, IHC, IP, WB
Recommended Dilution:	WB: 1/500-10000 IP: 1/20 ICC: 1/200 IHC: 1/50-300
Reactivity:	Human, Rat, Mouse
Host:	Mouse
Isotype:	IgG1
Clonality:	Monoclonal
Immunogen:	Recombinant Protein of Tubulin alpha-1A chain
Formulation:	Liquid in PBS containing 50% glycerol, 0.5% BSA and 0.03% Proclin 300, pH 7.3.
Concentration:	lot specific
Purification:	Affinity Purified
Conjugation:	Unconjugated
Storage:	Store at 4°C short term. Aliquot and store at -20°C long term. Avoid freeze/thaw cycles.
Stability:	1 year
Predicted Protein Size:	Observed MW (kDa):52
Gene Name:	tubulin alpha 4a
Database Link:	Entrez Gene 7277 Human P68363
Background:	Swiss-Prot Acc.P68363.Tubulin is the major constituent of microtubules. It binds two moles of GTP, one at an exchangeable site on the beta chain and one at a non-exchangeable site on the alpha chain.SitesFeature keyPosition(s)Description
Synonyms:	FLJ30169; H2-ALPHA; TUBA1

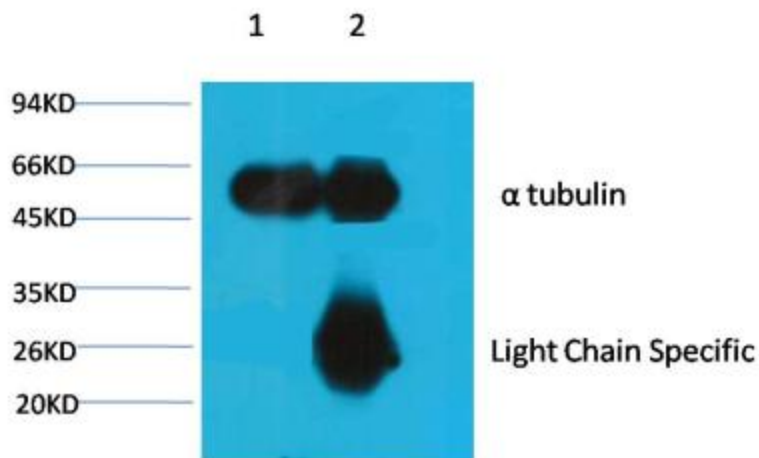


[View online »](#)

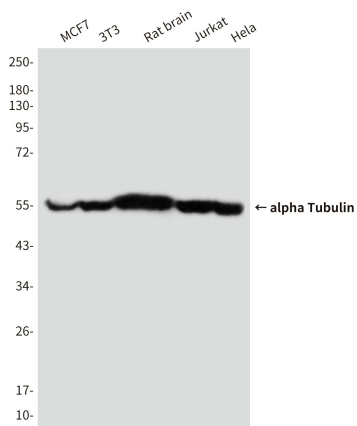
Product images:



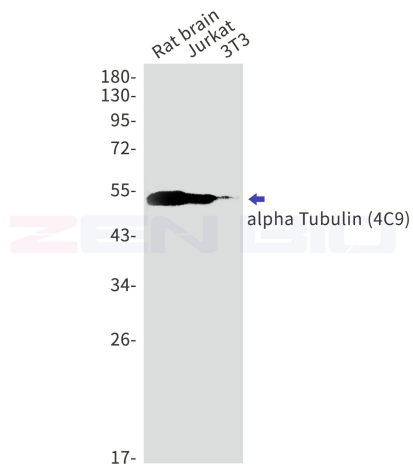
IF analysis of HeLa with (Left) and DAPI (Right) diluted at 1:100.



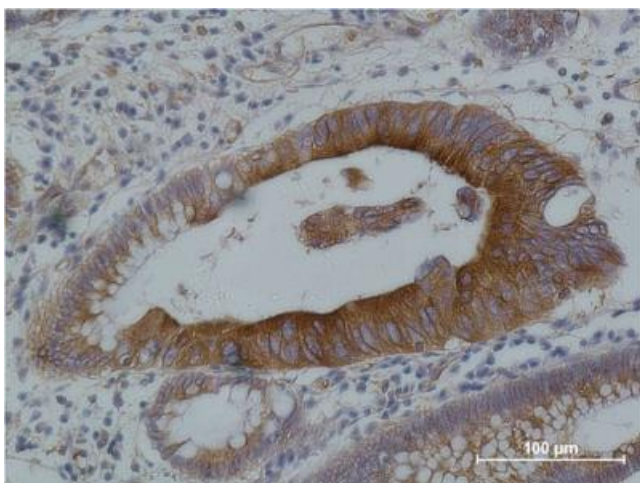
1) Input: Mouse Brain Tissue Lysate 2) IP product: IP dilute 1:2



Western blot analysis of alpha Tubulin in MCF-7, 3T3, rat Brain, Jurkat and HeLa lysates using alpha tubulin antibody.



Western blot detection of alpha Tubulin (4C9) in Rat brain ,Jurkat,3T3 cell lysates using alpha Tubulin (4C9) antibody. Observed band size:52kDa.



Immunohistochemical analysis of paraffin-embedded human Colon carcinoma using alpha tubulin mouse mAb diluted at 1:500.